

CONTENTS


45	Product Overview	64	Flat Backs Hotfix
52	Round Stones	65	Sew-on Articles
52	Fancy Stones & Settings	69	Transfers
57	Beads	71	Synthetics
59	Crystal Pearls	77	Metal Trimmings
60	Pendants	86	Crystal Inspiration Collection
61	Flat Backs No Hotfix	105	Why Swarovski


PRODUCT OVERVIEW

NEW CRYSTAL ELEMENTS

Fancy Stones & Settings


 **4499** Kaleidoscope Square Fancy Stone
6, 10, 14, 20 mm

 **4499/J**
10, 14 mm


 **4499/S**
6, 10, 14, 20 mm


 **4699** Kaleidoscope Hexagon Fancy Stone
6x6.9, 9.4x10.8, 14x16, 20 x22.9 mm

 **4699/J**
9.4x10.8, 14x16 mm


 **4699/S**
6x6.9, 9.4x10.8, 14x16, 20 x22.9 mm

 **4799** Kaleidoscope Triangle Fancy Stone
6x6.1, 9.2x9.4, 14x14.3, 20 x20.4 mm


 **4799/J**
9.2x9.4, 14x14.3 mm

 **4799/S**
6x6.1, 9.2x9.4, 14x14.3, 20 x20.4 mm


Pendants


 **6431** Princess Cut Pendant
9, 11.5, 16 mm

Flat Backs No Hotfix


 **2019** Round Spike Flat Back
4, 5, 6 mm


 **2419** Square Spike Flat Back
4, 5, 6 mm

 **2208/4** Cabochon Navette
8x4.5, 10x5.5 mm

 **2308/4** Cabochon Drop
8x5, 10x6 mm


 **2408/4** Cabochon Square
4, 6, 8 mm

 **2510** Baguette Flat Back
3.7x1.9 mm


 **2808** Heart Flat Back
3.6 mm

Flat Backs Hotfix

 **2510** Baguette Flat Back
3.7x1.9 mm

 **2808** Heart Flat Back
3.6 mm

Sew-on Articles

 **3296** Square Spike Sew-on Stone
7, 10 mm

 **3297** Round Spike Sew-on Stone
7, 10 mm


NEW FORWARD-INTEGRATED ELEMENTS

Synthetics

 **Crystal Fine Medley**
73 200-73 299


Metal Trimmings

XIRIUS Flat Back Rivets

 **56101** XIRIUS Flat Back Rivets
SS 16


 **56102** XIRIUS Flat Back Rivets
SS 20


 **56103** XIRIUS Flat Back Rivets
SS 34

 **56104** XIRIUS Flat Back Rivets
SS 40

 **56105** XIRIUS Flat Back Rivets
SS 48

Cabochon Rivets

 **56106** Cabochon Rivets
SS 16

 **56107** Cabochon Rivets
SS 34

Back Parts for XIRIUS Flat Back Rivets and Cabochon Rivets

 **56198**

 **56199**

NEW APPLICATION TOOLS

New Tools for application XIRIUS Flat Back Rivets and Cabochon Rivets

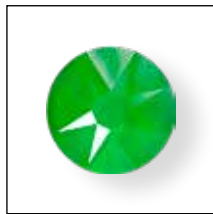
NEW CRYSTAL ELECTRIC LACQUER^{PRO} EFFECTS

As an industry game-changer, the neon-like palette of the Crystal Electric Lacquer^{PRO} Family delivers a high-voltage sparkle like no other. The inspiration comes from an exuberant tropical spectrum—a heightened sense of color that transforms the performer into a vibrant bird of paradise. It’s a strategy focused on ensuring that the dancer captures—and holds—an audience from the second they step into the spotlight. The

aim is to drench the senses in color, exuberant prints, densely encrusted crystals, and materials that move. The result is phenomenal tactile designs. The designs are mesmerizing. They bridge the gap between stage and judging panel with myriad new creative possibilities, enhancing a costume’s competitive advantage.



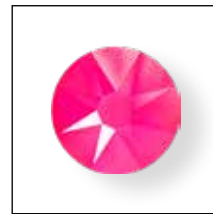
Crystal Electric Blue
(001 L134S)



Crystal Electric Green
(001 L135S)



Crystal Electric Orange (001 L136S)



Crystal Electric Pink
(001 L137S)

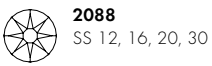


Crystal Electric Yellow
(001 L138S)



Crystal Electric White
(001 L139S)

Flat Backs No Hotfix



2088
SS 12, 16, 20, 30

Flat Backs Hotfix



2038
SS 10



2078
SS 16, 20, 34

Transfers



2038
SS 10



2078
SS 16, 20, 34

NEW CRYSTAL LACQUER^{PRO} DELITE EFFECTS

Beautiful, brilliant and multi-functional, the new Crystal DeLite color palette offers interest and intrigue to any design. The continual focus on hi-lo styling and the casualization of luxury is perfectly captured in the blending and blurring of the iridescent hues in this stunning color range. This radiant crystal collection crosses the divide between the extraordinary and the everyday.



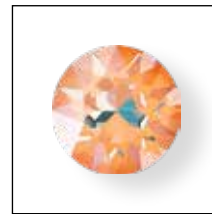
Crystal Laguna DeLite (001 L142D)



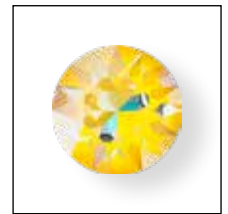
Crystal Lavender DeLite (001 L144D)



Crystal Ocean DeLite (001 L143D)



Crystal Peach DeLite (001 L140D)



Crystal Sunshine DeLite (001 L141D)

Round Stones



1088
SS 29, 39



1122
12, 14 mm



4470
10, 12 mm



4499
6, 10, 14, 20 mm



4699
6x6.9, 9.4x10.8, 14x16,
20 x22.9 mm



4799
6x6.1, 9.2x9.4, 14x14.3,
20 x20.4 mm

Transfers



2038
SS 10



2078
SS 16, 34

Fancy Stones & Settings



4120
14x10, 18x13 mm



4122
8x6, 14x10.5, 18x13.5 mm



4127
30x22 mm



4228
10x5 mm



4320
14x10, 18x13 mm



4327
30x20 mm

Flat Backs No Hotfix



2088
SS 12, 16, 20, 30

Flat Backs Hotfix



2038
SS 10



2078
SS 16, 34

Metal Trimmings



55 000, 55 001
SS 20



55 300, 55 301
SS 16



55 500, 55 501
SS 12

Additional available Crystal Lacquer^{PRO} DeLite effects



Crystal Light Grey
DeLite
(001 L129D)



Crystal Cappuccino
DeLite
(001 L133D)



Crystal Ochre
DeLite
(001 L131D)



Crystal Burgundy
DeLite
(001 L132D)



Crystal Army
Green DeLite
(001 L130D)

All available Crystal Shiny Lacquer^{PRO} effects



Crystal Ivory
Cream
(001 L106S)



Crystal Buttercup
(001 L124S)



Crystal Light Coral
(001 L116S)



Crystal Royal Red
(001 L107S)



Crystal Dark Red
(001 L108S)



Crystal Peony Pink
(001 L113S)



Crystal Lilac
(001 L126S)



Crystal Summer
Blue (001 L114S)



Crystal Azure Blue
(001 L112S)



Crystal Royal Blue
(001 L110S)



Crystal Royal
Green
(001 L109S)



Crystal Lime
(001 L125S)



Crystal Mint Green
(001 L115S)



Crystal Dark Grey
(001 L111S)

All available Crystal Lacquer^{PRO} Powder effects



Crystal Powder
Yellow
(001 L101)



Crystal Powder
Rose (001 L103)



Crystal Powder
Blue (001 L104)



Crystal Powder
Green (001 L102)



Crystal Powder
Grey (001 L105)

NEW SHIMMER EFFECTS



Light Amethyst
Shimmer
(212 SHIM)

Beads



5000³
4, 6, 8 mm



5328
3², 4², 5, 6 mm

Pendants



6106¹
16, 22 mm



6228¹
10.3x10, 14.4x14,
18x17.5 mm

Sew-on Articles



3230¹
12x7, 18x10.5, 28x17 mm



Light Rose
Shimmer
(223 SHIM)



Tanzanite Shimmer
(539 SHIM)

Flat Backs No Hotfix



2058
SS 5, 9



2088
SS 12, 16, 20, 30

Flat Backs Hotfix



2038
SS 6, 10



2078
SS 16, 20, 34

Transfers



2038
SS 6, 10



2078
SS 16, 20, 34

¹ These articles are now also available in Light Amethyst (212)

² These sizes are also available in Shimmer 2x

³ The article 5000 in 4 mm, 6 mm and 8 mm will also be launched in the Crystal Shimmer variant

NEW SHIMMER EFFECTS



Rose Shimmer
(209 SHIM)



Aquamarine Shimmer
(202 SHIM)



Siam Shimmer
(208 SHIM)



Peridot Shimmer
(214 SHIM)

Beads



5000²
4, 6, 8 mm



5328
3², 4², 5, 6 mm

Additional available Shimmer effects



Crystal Shimmer
(001 SHIM)



Silk Shimmer
(391 SHIM)



Hyacinth Shimmer
(236 SHIM)



Light Siam Shimmer
(227 SHIM)



Fuchsia Shimmer
(502 SHIM)



Siam Shimmer
(208 SHIM)



Cobalt Shimmer
(369 SHIM)



Light Sapphire Shimmer
(211 SHIM)



Blue Zircon Shimmer
(229 SHIM)



Black Diamond Shimmer
(215 SHIM)



Peridot Shimmer
(214 SHIM)



Erinite Shimmer
(360 SHIM)



Light Colorado Topaz Shimmer
(246 SHIM)



Citrine Shimmer
(249 SHIM)



Light Topaz Shimmer
(226 SHIM)



Topaz Shimmer
(203 SHIM)

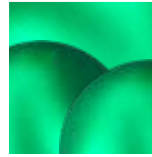


Tangerine Shimmer
(259 SHIM)

² These sizes are also available in Shimmer 2x | ³ The article 5000 in 4 mm, 6 mm and 8 mm will also be launched in the Crystal Shimmer variant

NEW CRYSTAL PEARL COLOR

Clamoring for a style outlet, an expression of freedom and fun that steps outside of everyday wardrobes, designers will find their "Eden" in the evergreen color of this beautiful lustrous pearl. An intense, shimmering color that is reminiscent of the 80s, it receives a contemporary update as opulence continues to infiltrate both day and eveningwear. Even the name itself means delight!



Crystal Eden
Green Pearl
(001 2014)

Crystal Pearls



5810

2, 3, 4, 5, 6, 8, 10, 12 mm



5818

6, 8, 10 mm



5817

6, 8 mm



5860

10, 12 mm

LINE EXTENSIONS

New Effects for Crystaltex Lacquer^{PRO}

Crystal Ivory Cream (001 L106S)
Crystal Royal Red (001 L107S)
Crystal Royal Green (001 L109S)
Crystal Royal Blue (001 L110S)
Crystal Azure Blue (001 L112S)
Crystal Peony Pink (001 L113S)
Crystal Summer Blue (001 L114S)
Crystal Mint Green (001 L115S)
Crystal Light Coral (001 L116S)
Crystal Lilac (001 L126S)
Crystal Buttercup (001 L124S)
Crystal Lime (001 L125S)

New Sizes for Fine Rocks Tube

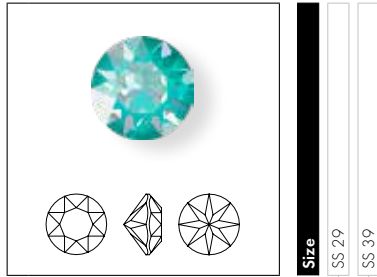
5950 8 mm
5951 8 mm

New Sizes for Flat Backs

2510 3.7x1.9 mm
2808 3.6 mm

ROUND STONES

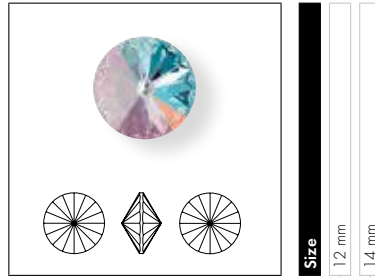
1088 XIRIUS Chaton



Size
SS 29
SS 39

- Crystal Effects
- Crystal Lacquer^{PRO} Effects
- Crystal Lacquer^{PRO} DeLite Effects
- NEW! Crystal Laguna Delite (001 L142D)
- NEW! Crystal Lavender Delite (001 L144D)
- NEW! Crystal Ocean Delite (001 L143D)
- NEW! Crystal Peach Delite (001 L140D)
- NEW! Crystal Sunshine Delite (001 L141D)

1122 Rivoli

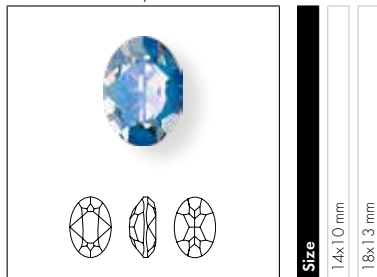


Size
12 mm
14 mm

- Crystal Effects
- Crystal Lacquer^{PRO} Effects
- Crystal Lacquer^{PRO} DeLite Effects
- NEW! Crystal Laguna Delite (001 L142D)
- NEW! Crystal Lavender Delite (001 L144D)
- NEW! Crystal Ocean Delite (001 L143D)
- NEW! Crystal Peach Delite (001 L140D)
- NEW! Crystal Sunshine Delite (001 L141D)

FANCY STONES & SETTINGS

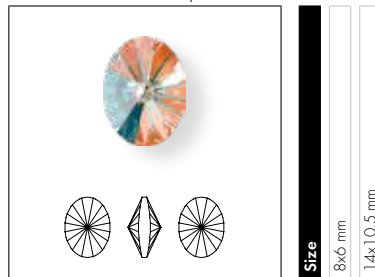
4120 Oval Fancy Stone



Size
14x10 mm
18x13 mm

- Crystal Effects
- Crystal Lacquer^{PRO} Effects
- Crystal Lacquer^{PRO} DeLite Effects
- NEW! Crystal Laguna Delite (001 L142D)
- NEW! Crystal Lavender Delite (001 L144D)
- NEW! Crystal Ocean Delite (001 L143D)
- NEW! Crystal Peach Delite (001 L140D)
- NEW! Crystal Sunshine Delite (001 L141D)

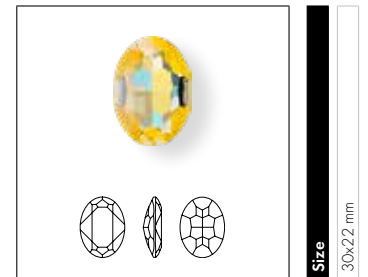
4122 Oval Rivoli Fancy Stone



Size
8x6 mm
14x10.5 mm
18x13.5 mm

- Crystal Effects
- Crystal Lacquer^{PRO} Effects
- Crystal Lacquer^{PRO} DeLite Effects
- NEW! Crystal Laguna Delite (001 L142D)
- NEW! Crystal Lavender Delite (001 L144D)
- NEW! Crystal Ocean Delite (001 L143D)
- NEW! Crystal Peach Delite (001 L140D)
- NEW! Crystal Sunshine Delite (001 L141D)

4127



Size
30x22 mm

- Crystal Effects
- Crystal Lacquer^{PRO} Effects
- Crystal Lacquer^{PRO} DeLite Effects
- NEW! Crystal Laguna Delite (001 L142D)
- NEW! Crystal Lavender Delite (001 L144D)
- NEW! Crystal Ocean Delite (001 L143D)
- NEW! Crystal Peach Delite (001 L140D)
- NEW! Crystal Sunshine Delite (001 L141D)

4228 XILION Navette Fancy Stone



Size
10x5 mm

- Crystal Effects**
- Crystal Lacquer^{PRO} Effects**
- Crystal Lacquer^{PRO} DeLite Effects**
- Crystal Laguna Delite (001 L142D)
- Crystal Lavender Delite (001 L144D)
- Crystal Ocean Delite (001 L143D)
- Crystal Peach Delite (001 L140D)
- Crystal Sunshine Delite (001 L141D)

NEW!
NEW!
NEW!
NEW!
NEW!
NEW!

4320 Pear Fancy Stone

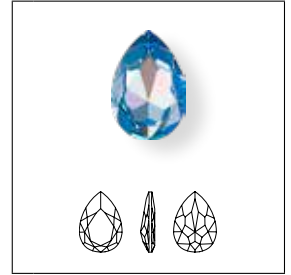


Size
14x10 mm
18x13 mm

- Crystal Effects**
- Crystal Lacquer^{PRO} Effects**
- Crystal Lacquer^{PRO} DeLite Effects**
- Crystal Laguna Delite (001 L142D)
- Crystal Lavender Delite (001 L144D)
- Crystal Ocean Delite (001 L143D)
- Crystal Peach Delite (001 L140D)
- Crystal Sunshine Delite (001 L141D)

NEW!
NEW!
NEW!
NEW!
NEW!
NEW!

4327

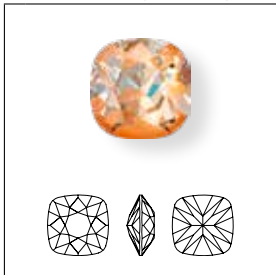


Size
30x20 mm

- Crystal Effects**
- Crystal Lacquer^{PRO} Effects**
- Crystal Lacquer^{PRO} DeLite Effects**
- Crystal Laguna Delite (001 L142D)
- Crystal Lavender Delite (001 L144D)
- Crystal Ocean Delite (001 L143D)
- Crystal Peach Delite (001 L140D)
- Crystal Sunshine Delite (001 L141D)

NEW!
NEW!
NEW!
NEW!
NEW!
NEW!

4470 Cushion Square Fancy Stone



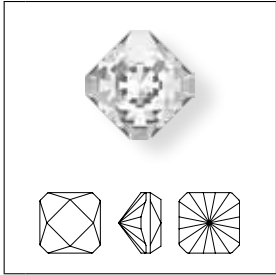
Size
10 mm
12 mm

- Crystal Effects**
- Crystal Lacquer^{PRO} Effects**
- Crystal Lacquer^{PRO} DeLite Effects**
- Crystal Laguna Delite (001 L142D)
- Crystal Lavender Delite (001 L144D)
- Crystal Ocean Delite (001 L143D)
- Crystal Peach Delite (001 L140D)
- Crystal Sunshine Delite (001 L141D)

NEW!
NEW!
NEW!
NEW!
NEW!

KALEIDOSCOPE FAMILY

4499 Kaleidoscope Square Fancy Stone ^{NEW!}



Size	6 mm	10 mm	14 mm	20 mm
------	------	-------	-------	-------

Crystal

Crystal F (001)

Colors

Plain Colors

- Amethyst F (204)
- Aquamarine F (202)
- Emerald F (205)
- Jet (280)
- Majestic Blue F (296)
- Rose F (209)
- Scarlet F (276)

Crystal Effects

Transparent Effects

- Crystal AB F (001 AB)
- Crystal Golden Shadow F (001 GSHA)
- Crystal Silver Night (001 SINI)
- Crystal Vitrail Medium F (001 VM)

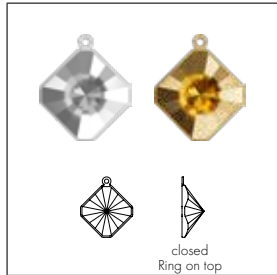
Crystal Lacquer^{PRO} Effects

Crystal Lacquer^{PRO} DeLite Effects

- Crystal Laguna DeLite (001 L142D) ^{NEW!}
- Crystal Lavender DeLite (001 L144D) ^{NEW!}
- Crystal Ocean DeLite (001 L143D) ^{NEW!}
- Crystal Peach DeLite (001 L140D) ^{NEW!}
- Crystal Sunshine DeLite (001 L141D) ^{NEW!}

Crystal F (001)	■	■	■	■
Amethyst F (204)	■	■	■	■
Aquamarine F (202)	■	■	■	■
Emerald F (205)	■	■	■	■
Jet (280)	■	■	■	■
Majestic Blue F (296)	■	■	■	■
Rose F (209)	■	■	■	■
Scarlet F (276)	■	■	■	■
Crystal AB F (001 AB)	■	■	■	■
Crystal Golden Shadow F (001 GSHA)	■	■	■	■
Crystal Silver Night (001 SINI)	■	■	■	■
Crystal Vitrail Medium F (001 VM)	■	■	■	■
Crystal Laguna DeLite (001 L142D) ^{NEW!}	■	■	■	■
Crystal Lavender DeLite (001 L144D) ^{NEW!}	■	■	■	■
Crystal Ocean DeLite (001 L143D) ^{NEW!}	■	■	■	■
Crystal Peach DeLite (001 L140D) ^{NEW!}	■	■	■	■
Crystal Sunshine DeLite (001 L141D) ^{NEW!}	■	■	■	■

4499/J Glue in Setting* ^{NEW!}



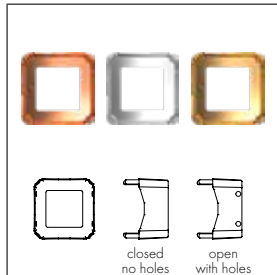
Size & color of plating	10 mm Rhodium	14 mm Rhodium	10 mm Gold	14 mm Gold
-------------------------	---------------	---------------	------------	------------

Ring/Hole, Back Configuration

1TC = Ring on top, closed

1TC = Ring on top, closed	■	■	■	■
---------------------------	---	---	---	---

4499/S ^{NEW!}



Size & color of plating	6 mm No plating	10 mm No plating	14 mm No plating	20 mm No plating	6 mm Rhodium	10 mm Rhodium	14 mm Rhodium	20 mm Rhodium	6 mm Gold	10 mm Gold	14 mm Gold	20 mm Gold
-------------------------	-----------------	------------------	------------------	------------------	--------------	---------------	---------------	---------------	-----------	------------	------------	------------

Ring/Hole, Back Configuration

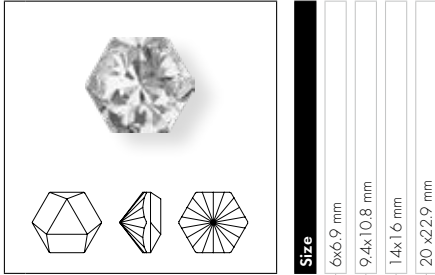
00 C = No ring, no hole, closed

H2 O = 4 holes/2 each side, open

00 C = No ring, no hole, closed	■	■	■	■	■	■	■	■	■	■	■	■
H2 O = 4 holes/2 each side, open	■	■	■	■	■	■	■	■	■	■	■	■

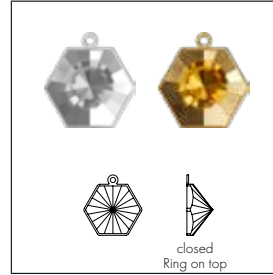
* Crystals can be glued into settings using a two-component epoxy resin glue, such as Swarovski's CG 500.

4699 Kaleidoscope Hexagon Fancy Stone NEW!



Crystal	6x6.9 mm	9.4x10.8 mm	1.4x1.6 mm	20 x22.9 mm
Crystal F (001)	■	■	■	■
Colors				
Plain Colors				
Amethyst F (204)	■	■	■	■
Aquamarine F (202)	■	■	■	■
Emerald F (205)	■	■	■	■
Jet (280)	■	■	■	■
Majestic Blue F (296)	■	■	■	■
Rose F (209)	■	■	■	■
Scarlet F (276)	■	■	■	■
Crystal Effects				
Transparent Effects				
Crystal AB F (001 AB)	■	■	■	■
Crystal Golden Shadow F (001 GSHA)	■	■	■	■
Crystal Silver Night (001 SINI)	■	■	■	■
Crystal Vitrail Medium F (001 VM)	■	■	■	■
Crystal Lacquer^{PRO} Effects				
Crystal Lacquer^{PRO} DeLite Effects				
Crystal Laguna DeLite (001 L142D) <small>NEW!</small>	■	■	■	■
Crystal Lavender DeLite (001 L144D) <small>NEW!</small>	■	■	■	■
Crystal Ocean DeLite (001 L143D) <small>NEW!</small>	■	■	■	■
Crystal Peach DeLite (001 L140D) <small>NEW!</small>	■	■	■	■
Crystal Sunshine DeLite (001 L141D) <small>NEW!</small>	■	■	■	■

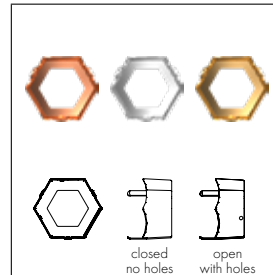
4699/J Glue in Setting* NEW!



Ring/Hole, Back Configuration
1T C = Ring on top, closed

Size & color of plating
6x6.9 mm No plating
9.4x10.8 mm Rhodium
1.4x1.6 mm Rhodium
9.4x10.8 mm Gold
1.4x1.6 mm Gold

4699/S NEW!

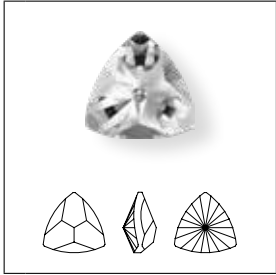


Ring/Hole, Back Configuration
00 C = No ring, no hole, closed
H2 O = 4 holes/2 each side, open

Size & color of plating
6x6.9 mm No plating
9.4x10.8 mm No plating
1.4x1.6 mm No plating
20 x22.9 mm No plating
6x6.9 mm Rhodium
9.4x10.8 mm Rhodium
1.4x1.6 mm Rhodium
20 x22.9 mm Rhodium
6x6.9 mm Gold
9.4x10.8 mm Gold
1.4x1.6 mm Gold
20 x22.9 mm Gold

* Crystals can be glued into settings using a two-component epoxy resin glue, such as Swarovski's CG 500.

4799 Kaleidoscope Triangle Fancy Stone ^{NEW!}



Size	6x6.1 mm	9.2x9.4 mm	14x14.3 mm	20 x20.4 mm
------	----------	------------	------------	-------------

Crystal

Crystal F (001)	■	■	■	■
-----------------	---	---	---	---

Colors

Plain Colors

Amethyst F (204)	■	■	■	■
Aquamarine F (202)	■	■	■	■
Emerald F (205)	■	■	■	■
Jet (280)	■	■	■	■
Majestic Blue F (296)	■	■	■	■
Rose F (209)	■	■	■	■
Scarlet F (276)	■	■	■	■

Crystal Effects

Transparent Effects

Crystal AB F (001 AB)	■	■	■	■
Crystal Golden Shadow F (001 GSHA)	■	■	■	■
Crystal Silver Night (001 SINI)	■	■	■	■
Crystal Vitrail Medium F (001 VM)	■	■	■	■

Crystal Lacquer^{PRO} Effects

Crystal Lacquer^{PRO} DeLite Effects

Crystal Laguna DeLite (001 L142D)	NEW!	■	■	■
Crystal Lavender DeLite (001 L144D)	NEW!	■	■	■
Crystal Ocean DeLite (001 L143D)	NEW!	■	■	■
Crystal Peach DeLite (001 L140D)	NEW!	■	■	■
Crystal Sunshine DeLite (001 L141D)	NEW!	■	■	■

4799/J Glue in Setting* ^{NEW!}

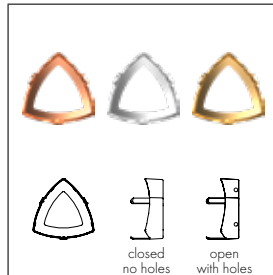


Size & color of plating	9.2x9.4 mm Rhodium	14x14.3 mm Rhodium	9.2x9.4 mm Gold	14x14.3 mm Gold
-------------------------	--------------------	--------------------	-----------------	-----------------

Ring/Hole, Back Configuration

1TC = Ring on top, closed	■	■	■	■
---------------------------	---	---	---	---

4799/S ^{NEW!}



Size & color of plating	6x6.1 mm No plating	9.2x9.4 mm No plating	14x14.3 mm No plating	20 x20.4 mm No plating	6x6.1 mm Rhodium	9.2x9.4 mm Rhodium	14x14.3 mm Rhodium	20 x20.4 mm Rhodium	6x6.1 mm Gold	9.2x9.4 mm Gold	14x14.3 mm Gold	20 x20.4 mm Gold
-------------------------	---------------------	-----------------------	-----------------------	------------------------	------------------	--------------------	--------------------	---------------------	---------------	-----------------	-----------------	------------------

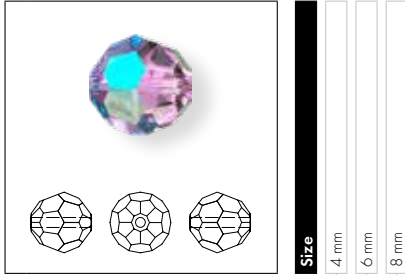
Ring/Hole, Back Configuration

00 C = No ring, no hole, closed	■	■	■	■	■	■	■	■	■	■	■	■
H2 O = 4 holes/2 each side, open	■	■	■	■	■	■	■	■	■	■	■	■

* Crystals can be glued into settings using a two-component epoxy resin glue, such as Swarovski's CG 500.

BEADS

5000 Classic Bead



Size	4 mm	6 mm	8 mm
-------------	------	------	------

Color Effects

Transparent Effects

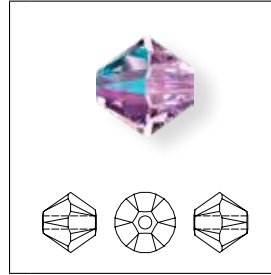
Crystal Shimmer (001 SHIM)	NEW!	■	■	■
----------------------------	------	---	---	---

Color Effects

Transparent Effects

Aquamarine Shimmer (202 SHIM)	NEW!	■	■	■
Light Amethyst Shimmer (212 SHIM)	NEW!	■	■	■
Peridot Shimmer (214 SHIM)	NEW!	■	■	■
Rose Shimmer (209 SHIM)	NEW!	■	■	■
Siam Shimmer (208 SHIM)	NEW!	■	■	■

5328 XILION Bead



Size	3 mm	4 mm	5 mm	6 mm
-------------	------	------	------	------

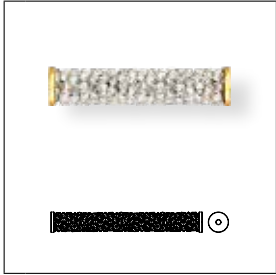
Color Effects

Transparent Effects

Aquamarine Shimmer (202 SHIM)	NEW!	■	■	■	■
Aquamarine Shimmer 2x (202 SHIM2)	NEW!	■	■	■	■
Light Amethyst Shimmer (212 SHIM)	NEW!	■	■	■	■
Light Amethyst Shimmer 2x (212 SHIM2)	NEW!	■	■	■	■
Peridot Shimmer (214 SHIM)	NEW!	■	■	■	■
Peridot Shimmer 2x (214 SHIM2)	NEW!	■	■	■	■
Rose Shimmer (209 SHIM)	NEW!	■	■	■	■
Rose Shimmer 2x (209 SHIM2)	NEW!	■	■	■	■
Siam Shimmer (208 SHIM)	NEW!	■	■	■	■
Siam Shimmer 2x (208 SHIM2)	NEW!	■	■	■	■

FINE ROCKS TUBE

5950 Fine Rocks Tube with ending



Size & color of coating	NEW! NEW!	NEW!	NEW!	NEW!	NEW!
	8 mm Stainless Steel				
	8 mm Gold				
	1.5 mm Stainless Steel				
	1.5 mm Gold				
	30 mm Stainless Steel				
30 mm Gold					

Colors

Plain Colors

- Amethyst (204)
- Erinite (360)
- Fuchsia (502)
- Jet (280)
- Light Siam (227)
- Vintage Rose (319)

Crystal Effects

Transparent Effects

- Crystal Bermuda Blue (001 BBL)
- Crystal Golden Shadow (001 GSHA)
- Crystal Moonlight (001 MOL)
- NEW! Crystal Paradise Shine (001 PARSH)
- NEW! Light Amethyst Paradise Shine (212 PARSH)

Metallic Effects

- Crystal Light Chrome (001 LTCH)

Multicolors

- Jet & Crystal Metallic Silver (001 M100)
- NEW! Light Colorado Topaz & Crystal Dorado & Light Colorado Topaz Dorado (M113)
- NEW! Vintage Rose & Vintage Rose Metallic Light Gold (M127)

5951 Fine Rocks Tube without ending



Size & color of coating	NEW!	NEW!	NEW!
	8 mm		
	1.5 mm		
	30 mm		

Colors

Plain Colors

- Amethyst (204)
- Erinite (360)
- Fuchsia (502)
- Jet (280)
- Light Siam (227)
- Vintage Rose (319)

Crystal Effects

Transparent Effects

- Crystal Bermuda Blue (001 BBL)
- Crystal Golden Shadow (001 GSHA)
- Crystal Moonlight (001 MOL)
- NEW! Crystal Paradise Shine (001 PARSH)
- NEW! Light Amethyst Paradise Shine (212 PARSH)

Metallic Effects

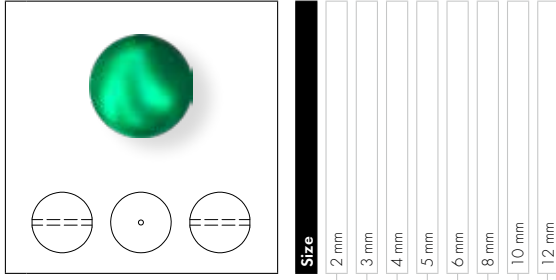
- Crystal Light Chrome (001 LTCH)

Multicolors

- Jet & Crystal Metallic Silver (001 M100)
- NEW! Light Colorado Topaz & Crystal Dorado & Light Colorado Topaz Dorado (M113)
- NEW! Vintage Rose & Vintage Rose Metallic Light Gold (M127)

CRYSTAL PEARLS

5810 Crystal Round Pearl



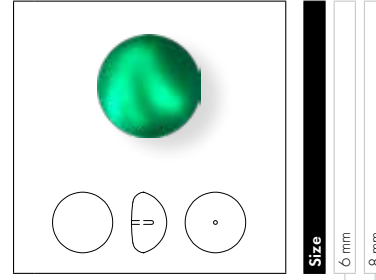
3D rendering of a round pearl. Below it are three diagrams: a circle with a horizontal dashed line, a circle with a central dot, and a circle with a horizontal dashed line.

Size
2 mm
3 mm
4 mm
5 mm
6 mm
8 mm
10 mm
12 mm

Iridescent Colors
● Crystal Eden Green Pearl (001 2014)

NEW!

5817



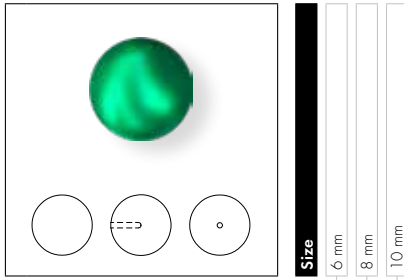
3D rendering of a round pearl. Below it are three diagrams: a circle with a horizontal dashed line, a circle with a vertical dashed line, and a circle with a central dot.

Size
6 mm
8 mm

Iridescent Colors
● Crystal Eden Green Pearl (001 2014)

NEW!

5818



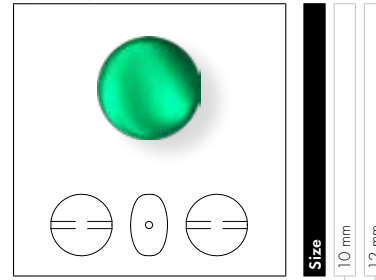
3D rendering of a round pearl. Below it are three diagrams: a circle with a horizontal dashed line, a circle with a horizontal dashed line and a central dot, and a circle with a central dot.

Size
6 mm
8 mm
10 mm

Iridescent Colors
● Crystal Eden Green Pearl (001 2014)

NEW!

5860 Crystal Coin Pearl



3D rendering of a coin pearl. Below it are three diagrams: a circle with a horizontal dashed line, an oval with a central dot, and a circle with a horizontal dashed line.

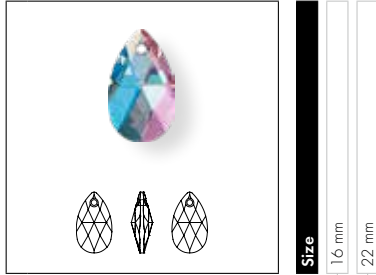
Size
10 mm
12 mm

Iridescent Colors
● Crystal Eden Green Pearl (001 2014)

NEW!

PENDANTS

6106 Pear-shaped Pendant



Size
1.6 mm
22 mm

- Colors**
- Plain Colors**
- Light Amethyst (212) NEW!
- Color Effects**
- Transparent Effects**
- Light Amethyst Shimmer (212 SHIM) NEW!

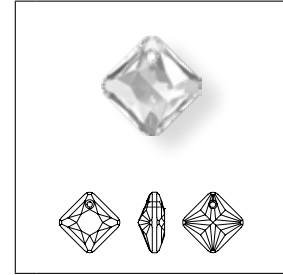
6228 XILION Heart Pendant



Size
10.3x10 mm
14.4x14 mm
18x17.5 mm

- Colors**
- Plain Colors**
- Light Amethyst (212) NEW!
- Color Effects**
- Transparent Effects**
- Light Amethyst Shimmer (212 SHIM) NEW!

6431 Princess Cut Pendant NEW!



Size
9 mm
11.5 mm
1.6 mm

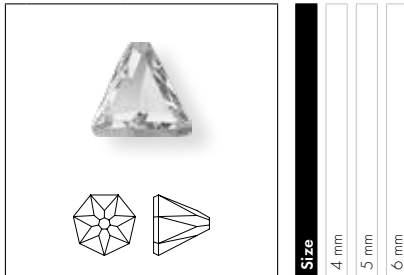
- Crystal**
- Crystal (001)
- Colors**
- Plain Colors**
- Amethyst (204)
- Aquamarine (202)
- Emerald (205)
- Light Amethyst (212)
- Light Siam (227)
- Montana (207)
- Peridot (214)
- Rose (209)
- Sapphire (206)
- Siam (208)
- Topaz (203)
- Crystal Effects**
- Transparent Effects**
- Crystal AB (001 AB)
- Crystal Bermuda Blue P (001 BBL)¹
- Crystal Golden Shadow (001 GSHA)
- Crystal Silver Night (001 SINI)
- Crystal Vitrail Medium P (001 VM)¹

¹ For details about the protective coating, please refer to the Collection 2018 chapter 'Basic Information'.

FLAT BACKS NO HOTFIX

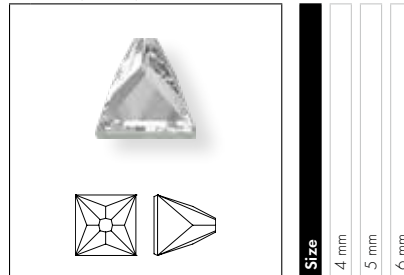
SPIKE FLAT BACKS

2019 Round Spike Flat Back ^{NEW!}



Crystal	
Crystal F (001)	■ ■ ■
Crystal Effects	
Transparent Effects	
Crystal AB F (001 AB)	■ ■ ■
Crystal Blue Shade F (001 BLSH)	■ ■ ■
Crystal Golden Shadow F (001 GSHA)	■ ■ ■
Crystal Volcano F (001 VOL)	■ ■ ■
Color Effects	
Transparent Effects	
Black Diamond Shimmer F (215 SHIM)	■ ■ ■
Light Topaz Shimmer F (226 SHIM)	■ ■ ■

2419 Square Spike Flat Back ^{NEW!}



Crystal	
Crystal F (001)	■ ■ ■
Crystal Effects	
Transparent Effects	
Crystal AB F (001 AB)	■ ■ ■
Crystal Blue Shade F (001 BLSH)	■ ■ ■
Crystal Golden Shadow F (001 GSHA)	■ ■ ■
Crystal Volcano F (001 VOL)	■ ■ ■
Color Effects	
Transparent Effects	
Black Diamond Shimmer F (215 SHIM)	■ ■ ■
Light Topaz Shimmer F (226 SHIM)	■ ■ ■

The Spike family



2019 chapter Flat Backs No Hotfix
4, 5, 6 mm p. 61



3296 chapter Sew-on Articles
7, 10 mm p. 65



2419 chapter Flat Backs No Hotfix
4, 5, 6 mm p. 61



3297 chapter Sew-on Articles
7, 10 mm p. 65

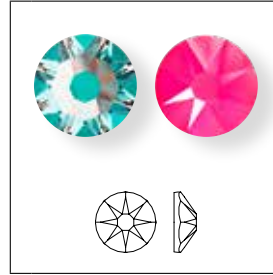
2058 XILLION Rose Enhanced



Size
SS 5
SS 9

Color Effects
Transparent Effects
Light Rose Shimmer F (223 SHIM) NEW!
Tanzanite Shimmer F (539 SHIM) NEW!

2088 XIRIUS Rose



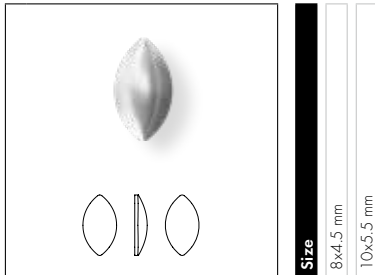
Size
SS 12
SS 16
SS 20
SS 30

Color Effects
Transparent Effects
Light Rose Shimmer F (223 SHIM) NEW!
Tanzanite Shimmer F (539 SHIM) NEW!
Crystal Effects
Crystal Lacquer ^{PRO} Effects
Crystal Lacquer ^{PRO} DeLite Effects
Crystal Laguna DeLite (001 L142D) NEW!
Crystal Lavender DeLite (001 L144D) NEW!
Crystal Ocean DeLite (001 L143D) NEW!
Crystal Peach DeLite (001 L140D) NEW!
Crystal Sunshine DeLite (001 L141D) NEW!
Crystal Electric Lacquer ^{PRO} Effects *
Crystal Electric Blue (001 L134S) NEW!
Crystal Electric Green (001 L135S) NEW!
Crystal Electric Orange (001 L136S) NEW!
Crystal Electric Pink (001 L137S) NEW!
Crystal Electric Yellow (001 L138S) NEW!
Crystal Electric White (001 L139S) NEW!

* The Electric Lacquer^{PRO} effects are UV light resistant. Nonetheless, due to the presence of neon pigments in the lacquers, Swarovski recommends using the crystals only under artificial lights, as excessive sun exposure can cause the pigments to fade.

CABOCHONS

2208/4 Cabochon Navette NEW!



Size
8x4.5 mm
10x5.5 mm

Crystal Pearl Colors

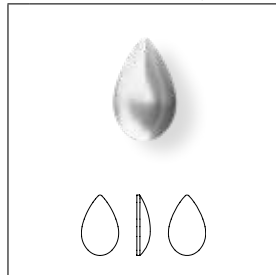
- Crystal Creampearl F (001 291)
- Crystal Nacre F (001 191)
- Crystal White Pearl F (001 650)

Crystal Color Effects

Metallic Effects

- Crystal Light Chrome F (001 ITCH)

2308/4 Cabochon Drop NEW!



Size
8x5 mm
10x6 mm

Crystal Pearl Colors

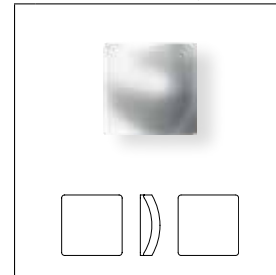
- Crystal Creampearl F (001 291)
- Crystal Nacre F (001 191)
- Crystal White Pearl F (001 650)

Crystal Color Effects

Metallic Effects

- Crystal Light Chrome F (001 ITCH)

2408/4 Cabochon Square NEW!



Size
4 mm
6 mm
8 mm

Crystal Pearl Colors

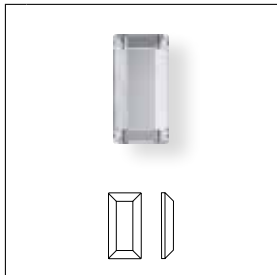
- Crystal Creampearl F (001 291)
- Crystal Nacre F (001 191)
- Crystal White Pearl F (001 650)

Crystal Color Effects

Metallic Effects

- Crystal Light Chrome F (001 ITCH)

2510 Baguette Flat Back NEW!



Size
3.7x1.9 mm

Crystal

- Crystal F (001)

Colors

Plain Colors

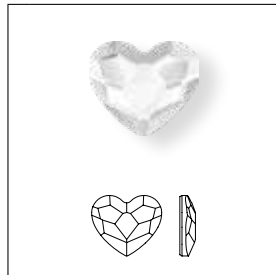
- Jet (280)

Crystal Effects

Transparent Effects

- Crystal AB F (001 AB)
- Crystal Golden Shadow F (001 GSHA)

2808 Heart Flat Back NEW!



Size
3.6 mm

Crystal

- Crystal F (001)

Colors

Plain Colors

- Jet (280)

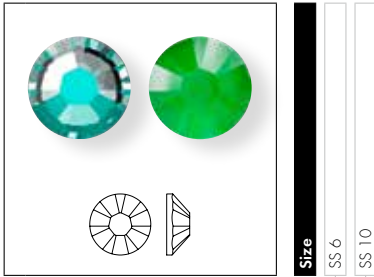
Crystal Effects

Transparent Effects

- Crystal AB F (001 AB)
- Crystal Golden Shadow F (001 GSHA)

FLAT BACKS HOTFIX

2038 XILLION Rose Hotfix



Size	SS 6	SS 10
-------------	------	-------

Color Effects		
Transparent Effects		
Light Rose Shimmer A HF (223 SHIM)	NEW!	■
Tanzanite Shimmer A HF (539 SHIM)	NEW!	■
Crystal Effects		
Crystal Lacquer^{PRO} Effects		
Crystal Lacquer^{PRO} DeLite Effects		
Crystal Laguna DeLite HFT (001 L142D)	NEW!	■
Crystal Lavender DeLite HFT (001 L144D)	NEW!	■
Crystal Ocean DeLite HFT (001 L143D)	NEW!	■
Crystal Peach DeLite HFT (001 L140D)	NEW!	■
Crystal Sunshine DeLite HFT (001 L141D)	NEW!	■
Crystal Electric Lacquer^{PRO} Effects*		
Crystal Electric Blue HFT (001 L134S)	NEW!	■
Crystal Electric Green HFT (001 L135S)	NEW!	■
Crystal Electric Orange HFT (001 L136S)	NEW!	■
Crystal Electric Pink HFT (001 L137S)	NEW!	■
Crystal Electric Yellow HFT (001 L138S)	NEW!	■
Crystal Electric White HFT (001 L139S)	NEW!	■

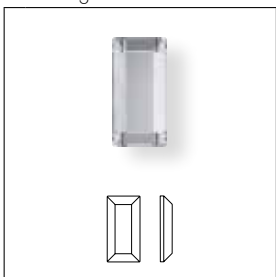
2078 XIRIUS Rose Hotfix



Size	SS 16	SS 20	SS 34
-------------	-------	-------	-------

Color Effects			
Transparent Effects			
Light Rose Shimmer A HF (223 SHIM)	NEW!	■	■
Tanzanite Shimmer A HF (539 SHIM)	NEW!	■	■
Crystal Effects			
Crystal Lacquer^{PRO} Effects			
Crystal Lacquer^{PRO} DeLite Effects			
Crystal Laguna DeLite HFT (001 L142D)	NEW!	■	■
Crystal Lavender DeLite HFT (001 L144D)	NEW!	■	■
Crystal Ocean DeLite HFT (001 L143D)	NEW!	■	■
Crystal Peach DeLite HFT (001 L140D)	NEW!	■	■
Crystal Sunshine DeLite HFT (001 L141D)	NEW!	■	■
Crystal Electric Lacquer^{PRO} Effects*			
Crystal Electric Blue HFT (001 L134S)	NEW!	■	■
Crystal Electric Green HFT (001 L135S)	NEW!	■	■
Crystal Electric Orange HFT (001 L136S)	NEW!	■	■
Crystal Electric Pink HFT (001 L137S)	NEW!	■	■
Crystal Electric Yellow HFT (001 L138S)	NEW!	■	■
Crystal Electric White HFT (001 L139S)	NEW!	■	■

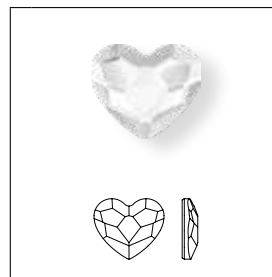
2510 Baguette Flat Back



Size	3.7x1.9 mm
-------------	------------

Crystal		
Crystal M HF (001)		■
Colors		
Plain Colors		
Jet M HF (280)		■
Crystal Effects		
Transparent Effects		
Crystal AB M HF (001 AB)		■
Crystal Golden Shadow M HF (001 GSHA)		■

2808 Heart Flat Back



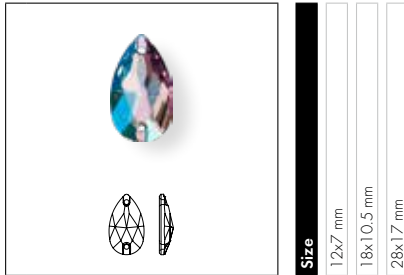
Size	3.6 mm
-------------	--------

Crystal		
Crystal M HF (001)		■
Colors		
Plain Colors		
Jet M HF (280)		■
Crystal Effects		
Transparent Effects		
Crystal AB M HF (001 AB)		■
Crystal Golden Shadow M HF (001 GSHA)		■

* The Electric Lacquer^{PRO} effects are UV light resistant. Nonetheless, due to the presence of neon pigments in the lacquers, Swarovski recommends using the crystals only under artificial lights, as excessive sun exposure can cause the pigments to fade.

SEW-ON ARTICLES

3230 Drop Sew-on Stone

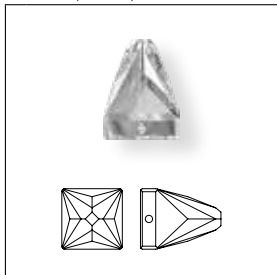


Size	12x7 mm	18x10.5 mm	28x17 mm
------	---------	------------	----------

- Colors**
- Plain Colors**
- Light Amethyst F (212) NEW!
- Color Effects**
- Transparent Effects**
- Light Amethyst Shimmer F (212 SHIM) NEW!

SPIKE SEW-ON STONES

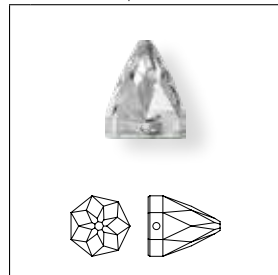
3296 Square Spike Sew-on Stone NEW!



Size	7 mm	10 mm
------	------	-------

- Crystal**
- Crystal F (001)
- Crystal Effects**
- Transparent Effects**
- Crystal AB F (001 AB)
- Crystal Blue Shade F (001 BLSH)
- Crystal Golden Shadow F (001 GSHA)
- Crystal Volcano F (001 VOL)
- Color Effects**
- Transparent Effects**
- Black Diamond Shimmer F (215 SHIM)
- Light Topaz Shimmer F (226 SHIM)

3297 Round Spike Sew-on Stone NEW!



Size	7 mm	10 mm
------	------	-------

- Crystal**
- Crystal F (001)
- Crystal Effects**
- Transparent Effects**
- Crystal AB F (001 AB)
- Crystal Blue Shade F (001 BLSH)
- Crystal Golden Shadow F (001 GSHA)
- Crystal Volcano F (001 VOL)
- Color Effects**
- Transparent Effects**
- Black Diamond Shimmer F (215 SHIM)
- Light Topaz Shimmer F (226 SHIM)

The Spike family



2019 chapter Flat Backs No Hotfix
4, 5, 6 mm p. 61



2419 chapter Flat Backs No Hotfix
4, 5, 6 mm p. 61



3296 chapter Sew-on Articles
7, 10 mm p. 65



3297 chapter Sew-on Articles
7, 10 mm p. 65

Application Advice

The Spike Sew-on Stones can be either sewn on or applied to different fabrics by hand. A synthetic multifilament thread with a thread count of Nm 50-80 is most suitable. Monofilament and pure cotton yarns are not recommended due to their limited abrasion resistance.

Care Instructions

Due to the shape of this articles, washing it by hand is recommended in order to avoid detaching the fabric and to prevent the crystals from being scratched:



Turn inside out and use mild laundry detergent (wash by hand, max. temp. 30°C, very mild process).

Do not use chlorine bleach!

Do not tumble dry!

Do not iron!

The textile can be gently dry-cleaned using perchlorethylene. Turn inside out.

The textile can be gently dry-cleaned using hydrocarbon. Turn inside out.

The textile will withstand gentle professional wet cleaning. Turn inside out.

To protect the crystals as much as possible, the use of a soft wash bag is recommended.

For detailed information about application, please refer to the Application Manual and our business website SWAROVSKI-PROFESSIONAL.COM

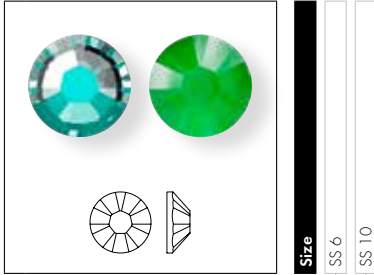
CRYSTAL ELEMENTS

Article Size	Packing Unit = Minimum Order Quantity in Pieces	Average Net Weight in Grams per Packing Unit Crystal (001)	Average Gross Weight in Grams per Packing Unit Crystal (001)
4499			
6 mm	144	29.4	50.1
10 mm	48	54.0	73.7
14 mm	24	69.9	91.2
20 mm	12	103.6	128.0
4499/J			
10 mm	48	38.4	42.0
14 mm	24	36.0	38.4
4499/S			
6 mm	144	31.7	36.0
10 mm	48	28.8	31.7
14 mm	24	37.0	41.0
20 mm	12	37.7	41.9
4699			
6x6.9 mm	144	26.5	51.2
9.4x10.8 mm	48	39.1	59.7
14x16 mm	24	71.3	92.0
20 x22.9 mm	12	86.3	110.6
4699/J			
9.4x10.8 mm	24	30.2	32.9
14x16 mm	48	27.8	30.7
4699/S			
6x6.9 mm	144	30.2	34.6
9.4x10.8 mm	48	24.0	26.9
14x16 mm	24	29.8	33.0
20 x22.9 mm	12	33.7	37.0
4799			
6x6.1 mm	144	18.6	42.9
9.2x9.4 mm	48	24.3	44.5
14x14.3 mm	24	38.5	59.2
20 x20.4 mm	12	48.7	78.2
4799/J			
9.2x9.4 mm	48	23.5	26.9
14x14.3 mm	24	26.4	30.0
4799/S			
6x6.1 mm	144	28.8	31.7
9.2x9.4 mm	48	17.8	21.0
14x14.3 mm	24	16.6	19.9
20 x20.4 mm	12	19.2	22.9
6431			
9 mm	72	22.1	40.5
11.5 mm	48	30.1	51.1
16 mm	24	41.9	62.6

Article Size	Packing Unit = Minimum Order Quantity in Pieces	Average Net Weight in Grams per Packing Unit Crystal (001)	Average Gross Weight in Grams per Packing Unit Crystal (001)
2019			
4 mm	144	10.8	32.1
5 mm	72	10.2	29.5
6 mm	72	17.4	35.0
2419			
4 mm	144	14.7	35.6
5 mm	72	14.5	34.1
6 mm	72	22.8	39.5
2510			
3.7x1.9 mm	720	8.2	10.6
2208/4			
8x4.5 mm	480	49.0	157.1
10x5.5 mm	288	53.6	278.2
2308/4			
8x5 mm	480	64.1	202.2
10x6 mm	288	55.0	285.0
2408/4			
4 mm	720	37.6	85.2
6 mm	480	73.0	229.0
8 mm	288	106.0	540.0
2808			
3.6 mm	720	18.4	20.8
3296			
7 mm	48	45.0	64.7
10 mm	36	86.0	106.1
3297			
7 mm	48	30.7	50.4
10 mm	36	59.4	77.5

TRANSFERS

2038 XILION Rose Hoflix



Color Effects

Transparent Effects

- Light Rose Shimmer A HF (223 SHIM)
- Tanzanite Shimmer A HF (539 SHIM)

Crystal Effects

Crystal Lacquer^{PRO} Effects

Crystal Lacquer^{PRO} DeLite Effects

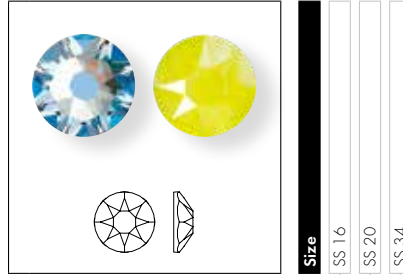
- Crystal Laguna DeLite HFT (001 L142D)
- Crystal Lavender DeLite HFT (001 L144D)
- Crystal Ocean DeLite HFT (001 L143D)
- Crystal Peach DeLite HFT (001 L140D)
- Crystal Sunshine DeLite HFT (001 L141D)

Crystal Electric Lacquer^{PRO} Effects *

- Crystal Electric Blue HFT (001 L134S)
- Crystal Electric Green HFT (001 L135S)
- Crystal Electric Orange HFT (001 L136S)
- Crystal Electric Pink HFT (001 L137S)
- Crystal Electric Yellow HFT (001 L138S)
- Crystal Electric White HFT (001 L139S)



2078 XIRIUS Rose Hoflix



Color Effects

Transparent Effects

- Light Rose Shimmer A HF (223 SHIM)
- Tanzanite Shimmer A HF (539 SHIM)

Crystal Effects

Crystal Lacquer^{PRO} Effects

Crystal Lacquer^{PRO} DeLite Effects

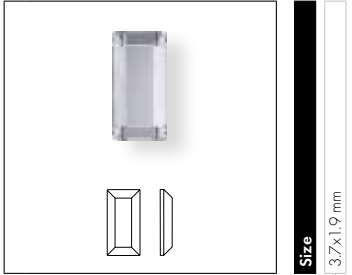
- Crystal Laguna DeLite HFT (001 L142D)
- Crystal Lavender DeLite HFT (001 L144D)
- Crystal Ocean DeLite HFT (001 L143D)
- Crystal Peach DeLite HFT (001 L140D)
- Crystal Sunshine DeLite HFT (001 L141D)

Crystal Electric Lacquer^{PRO} Effects *

- Crystal Electric Blue HFT (001 L134S)
- Crystal Electric Green HFT (001 L135S)
- Crystal Electric Orange HFT (001 L136S)
- Crystal Electric Pink HFT (001 L137S)
- Crystal Electric Yellow HFT (001 L138S)
- Crystal Electric White HFT (001 L139S)



2510 Baguette Flat Back

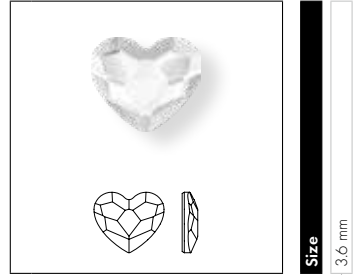


NEW!

Size 3.7x1.9 mm

- Crystal**
- Crystal M HF (001)
- Colors**
- Plain Colors**
- Jet M HF (280)
- Crystal Effects**
- Transparent Effects**
- Crystal AB M HF (001 AB)
- Crystal Golden Shadow M HF (001 GSHA)

2808 Heart Flat Back



NEW!

Size 3.6 mm

- Crystal**
- Crystal M HF (001)
- Colors**
- Plain Colors**
- Jet M HF (280)
- Crystal Effects**
- Transparent Effects**
- Crystal AB M HF (001 AB)
- Crystal Golden Shadow M HF (001 GSHA)

Application Advice

We recommend not using the Baguette Flat Back and the Heart Flat Back to generate row transfers. Due to their shape they easily tip over and therefore it is not possible to create a straight line or geometrical patterns where accurate positioning is required.

STANDARD COLLECTION

13 405



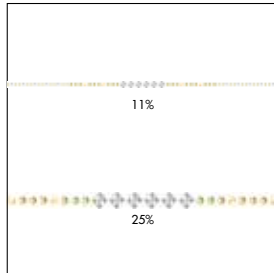
C 001AB/001L144D/001L140D/001AB/001AB

E 2555MM12x4/S10/S16/2402MM4/2400MM2.2

S ~97x13

M 70 PCS **35%**

13 406



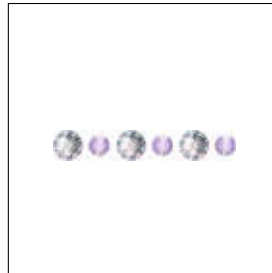
C 001L141D/001/001L141D/001L106S/001

E S10/S10/S16/S16/2403MM6

S ~325x8

M 22 PCS

13 407



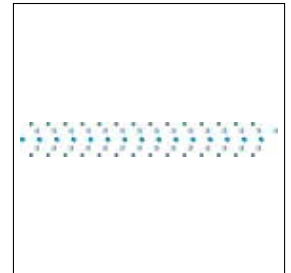
C 001L126S/001L144D

E S10/S16

S ~982x4 (118 SEG/ROW)

M 12 ROWS **100%**

13 408



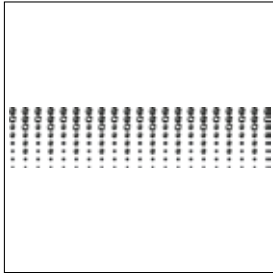
C 001METBL/001L143D/001L134S

E S10/S16/S16

S ~201x26

M 26 PCS **17%**

13 409



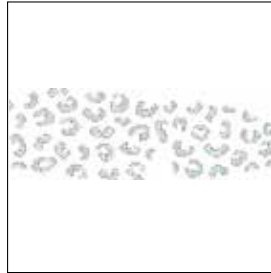
C 070/070/070-280LTCZ/
280LTCZ/280LTCZ
E M6/M8/M8-S10/S16/S20
S ~288x66
M 6 PCS **12%**

13 410



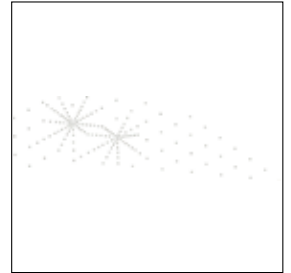
C R9005-001METBL/539SHIM/502/
001METSH/360/223SHIM/
502SHIM/360SHIM
E M2-S6/S6/S6/S6/S6/S6/S6
S ~186x68
M 12 PCS **19%**

13 411



C 086/092-001SSHA/001LTCZ/
001L132D/001L143D/001L142D/
001L132D/001L143D/001L142D
E M2/M2-S6/S6/S10/S10/S10/
S16/S16/S16
S ~294x100
M 2 PCS **12%**

13 412



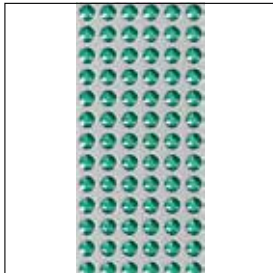
C 001SSHA
E S3
S ~196x62
M 8 PCS **18%**

SYNTHETICS

CRYSTALTEX

New Effects for Crystaltex

62 010



Rows	1 row	2 rows	3 rows	4 rows	5 rows	6 rows	Stone Size	SS 10	Color of Film	010 Transparent [S_Holfix_L_IT]	012 Black [S_Holfix_L_IT]
-------------	-------	--------	--------	--------	--------	--------	-------------------	-------	----------------------	---------------------------------	---------------------------

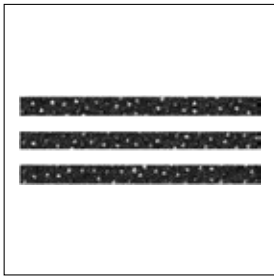
Crystal Effects	
Crystal Lacquer^{PRO} Effects	
Crystal Shiny Lacquer^{PRO} Effects	
Crystal Azure Blue [001 L112S]	■
Crystal Buttercup [001 L124S]	■
Crystal Ivory Cream [001 L106S]	■
Crystal Light Coral [001 L116S]	■
Crystal Lilac [001 L126S]	■
Crystal Lime [001 L125S]	■
Crystal Mint Green [001 L115S]	■
Crystal Peony Pink [001 L113S]	■
Crystal Royal Blue [001 L110S]	■
Crystal Royal Green [001 L109S]	■
Crystal Royal Red [001 L107S]	■
Crystal Summer Blue [001 L114S]	■

CRYSTAL FINE MEDLEY

Inspired by a lunar landscape. Small crystal balls combined with bicone chatons (pp14) create an irregular 3D surface with a smooth feel, which comes in a wide selection of colors. Two-color motifs are also available to order.

Article Explanation

73 200 ^{NEW!}



C	012-280HEM/280HEM
S	~90x32
M	32 PCS 35%

73 200	S	M	100%
Article number	Size	Minimum order quantity in pieces (PCS)	% of actual size

Ordering Example & Product Variety Explanation

73 200	I	012	280 NUT	280 NUT
Article number	Type of base material	Color of film	Crystal color corresponds with the small crystal balls combined with the pp14 double-pointed chatons.	Crystal color corresponding to the round uncut elements
	Hotfix I It version	010 Transparent 012 Black		
			Please see the relevant product matrix for all available reference codes.	
			It is possible to order two-color motifs. Crystal balls and pp14 double-pointed Chatons.	
			You can choose from the Crystal Fine Medley standard colors and effects (see color matrix).	

Available Base Materials and Crystal Colors & Effects

73 200-73 299

Color of Film

010 Transparent (Hoflix & L_IT)

012 Black (Hoflix & L_IT)

Colors

Plain Colors

- Jet (280)

Crystal Effects

Transparent Effects

- Crystal AB (001 AB)
- Crystal Golden Shadow (001 GSHA)
- Crystal Moonlight (001 MOL)
- Crystal Red Magma (001 REDM)
- Crystal Paradise Shine (001 PARSH)

73 200-73 299

Color of Film

010 Transparent (Hoflix & L_IT)

012 Black (Hoflix & L_IT)

Metallic Effects

- Crystal Chrome (001 CHRM)
- Crystal Comet Argent Light (001 CAL)
- Crystal Dorado (001 DOR)
- Crystal Iridescent Green (001 IRIG)
- Crystal Metallic Light Gold (001 MIGLD)

Color Effects

Metallic Effects

- Jet Nut (280 NUT)
- Jet Hematite (280 HEM)

Multicolors

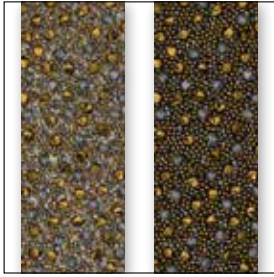
- Crystal Metallic Light Gold (001 MIGLD)
- Jet (280)

Overview of Available Colors & Effects



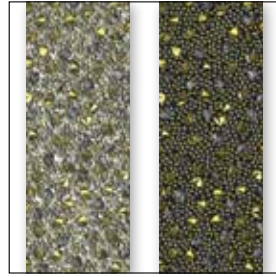
Please note: Crystal Comet Argent Light (001 CAL) is not suitable for swimwear because the 001 CAL effect is highly sensitive to seawater, sweat, and chlorine.

Crystal Dorado (001 DOR)



010 Transparent 012 Black

Crystal Iridescent Green (001 IRIG)



010 Transparent 012 Black

Crystal Metallic Light Gold (001 MIGLD)



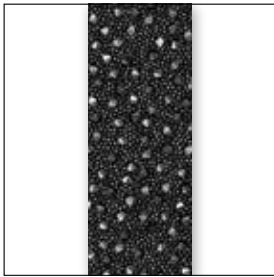
010 Transparent 012 Black

Jet Nut (280 NUT)



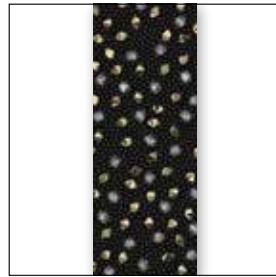
012 Black

Jet Hematite (280 HEM)



012 Black

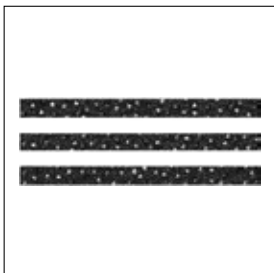
Crystal Metallic Light Gold (001 MIGLD) & Jet (280)



012 Black

STANDARD COLLECTION

73 200



C 012-280HEM/280HEM
S ~90x32
M 32 PCS **35%**

73 201



C 012-001CAL/001CAL
S ~34x32
M 84 PCS **100%**

73 202



C 012-001GSHA/001GSHA
S ~80x40
M 28 PCS **40%**

73 203



C 012-001PARSH/001PARSH
S ~69x29
M 40 PCS **45%**

73 204



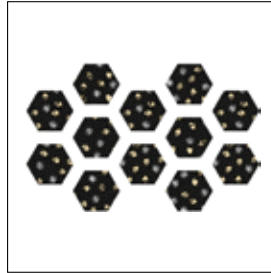
C 010-001MOL/001MOL
 S ~72x20
 M 52 PCS 45%

73 205



C 012-001IRIG/001IRIG
 S ~49x91
 M 24 PCS 35%

73 206



C 012-001MIGLD/280
 S ~124x79
 M 9 PCS 25%

73 207



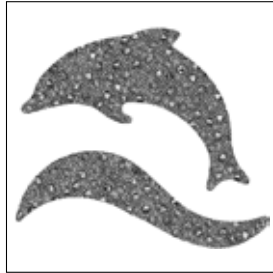
C 012-001MIGLD/001MIGLD
 S ~48x78
 M 24 PCS 40%

73 208



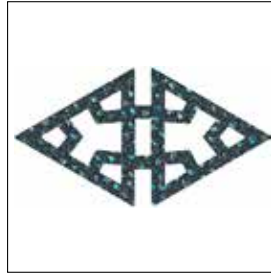
C 012-001MIGLD/001MIGLD
 S ~63x49
 M 30 PCS 50%

73 209



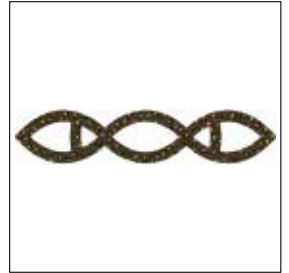
C 010-001CHRM/001CHRM
 S ~74x64
 M 20 PCS 45%

73 210



C 012-001PARSH/001PARSH
 S ~147x79
 M 9 PCS 23%

73 211



C 012-001DOR/001DOR
 S ~172x34
 M 14 PCS 20%

73 212



C 012-001MIGLD/001MIGLD
 S ~74x74
 M 30 PCS 45%

Application Advice

Crystal Fine Medley Hotfix can be easily applied with a standard heat press, by hand sewing, or using an additional gluing system to attach it to solid carrier materials.

When applying Crystal Fine Medley Hotfix, the Hotfix parameters for Crystal Medley apply.

Crystal Fine Medley IT comes ready to apply. It is pressure sensitive and self-adhesive, and it can be easily applied to solid materials that are suitable for gluing (surface tension of at least 38mN/m).

Care Instructions

Please find detailed cleaning information in the Application Manual as well as in the product information for Crystal Fine Medley.



Turn inside out, choose a gentle wash cycle and use mild laundry detergent.



Do not use chlorine bleach!



Do not tumble dry!



Iron inside out using a silk/polyester/viscose setting.



The textile will withstand gentle professional wet cleaning. Turn inside out.

To protect the crystals as much as possible, the use of a soft wash bag is recommended.

Ironing the textile inside out and using a pressing cloth is recommended.

To protect the crystals as much as possible, the use of a soft wash bag is recommended.

For detailed information about application, please refer to the Application Manual and our business website SWAROVSKI-PROFESSIONAL.COM

METAL TRIMMINGS

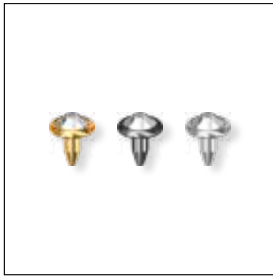
METAL COMPONENTS – XIRIUS FLAT BACK RIVETS

XIRIUS Flat Back Rivets are ideal for adding glamour to luxury leather goods, especially footwear and accessories. A close fit can be achieved with a flat, tiny back part and a smooth ergonomic appearance. They can be applied to various leather thicknesses without the need to pre-punch.

For all new Rivets and Back Parts, proper Application Tools are available for an easy and fast application.

Article Explanation

56 101 Xirius Flat Back Rivets ^{NEW!}



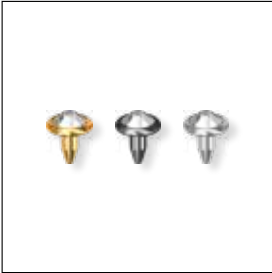
SS SS 16
M 1,440 PCS **120%**

56 101	SS	M	400%
Article number	Stone Size	Minimum order quantity in pieces (PCS)	% of actual size

Ordering Example & Product Variety Explanation

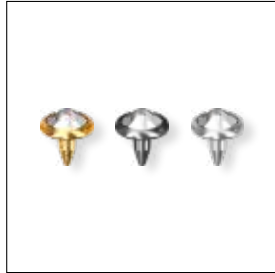
56 101	081	001	GSHA
Article number	Color of casing 081 Gold Plating 086 Gunmetal Plating 095 Palladium Plating	Color of crystals Please see the respective product matrix for all available reference codes.	Effect

56 101 Xirius Flat Back Rivets NEW!



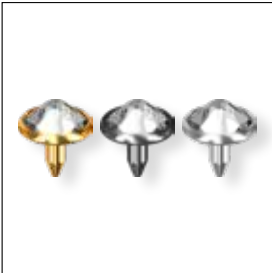
SS SS 16
M 1,440 PCS **120%**

56 102 Xirius Flat Back Rivets NEW!



SS SS 20
M 1,440 PCS **120%**

56 103 Xirius Flat Back Rivets NEW!



SS SS 34
M 144 PCS **120%**

<p>56 101 56 102 56 103</p>	<p>Color of Casing</p>	<p>081 Gold</p>	<p>086 Gunmetal</p>	<p>095 Palladium</p>
Crystal				
<input type="checkbox"/>	Crystal F (001)	<input type="checkbox"/>	<input type="checkbox"/>	<input type="checkbox"/>
Colors				
Plain Colors				
<input type="checkbox"/>	Black Diamond F (215)	<input type="checkbox"/>	<input type="checkbox"/>	<input type="checkbox"/>
<input type="checkbox"/>	Jet F (280)	<input type="checkbox"/>	<input type="checkbox"/>	<input type="checkbox"/>
<input type="checkbox"/>	Light Colorado Topaz F (246)	<input type="checkbox"/>	<input type="checkbox"/>	<input type="checkbox"/>
<input type="checkbox"/>	Majestic Blue F (296)	<input type="checkbox"/>	<input type="checkbox"/>	<input type="checkbox"/>
<input type="checkbox"/>	Scarlet F (276)	<input type="checkbox"/>	<input type="checkbox"/>	<input type="checkbox"/>
Crystal Effects				
Transparent Effects				
<input type="checkbox"/>	Crystal AB F (001 AB)	<input type="checkbox"/>	<input type="checkbox"/>	<input type="checkbox"/>
<input type="checkbox"/>	Crystal Golden Shadow F (001 GSHA)	<input type="checkbox"/>	<input type="checkbox"/>	<input type="checkbox"/>
<input type="checkbox"/>	Crystal Silver Shade F (001 SSHA)	<input type="checkbox"/>	<input type="checkbox"/>	<input type="checkbox"/>
Color Effects				
Metallic Effects				
<input type="checkbox"/>	Jet Hematite (280 HEM)	<input type="checkbox"/>	<input type="checkbox"/>	<input type="checkbox"/>

56 104 Xirius Flat Back Rivets ^{NEW!}



SS SS 40
M 144 PCS **120%**

56 105 Xirius Flat Back Rivets ^{NEW!}

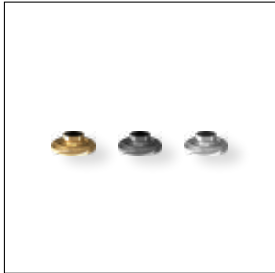


SS SS 48
M 96 PCS **120%**

<p>56 104 56 105</p>	<p>Color of Casing</p>	<p>081 Gold</p>	<p>086 Gunmetal</p>	<p>095 Palladium</p>
Crystal				
Crystal F (001)				
Crystal Effects				
Transparent Effects				
Crystal AB F (001 AB)				

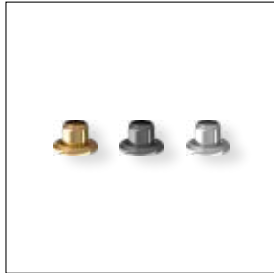
Back Parts

56 198 Back Part ^{NEW!}



M 1,440 PCS **120%**

56 199 Back Part ^{NEW!}



M 144 PCS **120%**

Back Part 56198 fits XIRIUS Flat Back Rivets 56101 and 56102 and Cabochon Rivets 56106

Back Part 56199 fits XIRIUS Flat Back Rivets 56103, 56104, 56105 and Cabochon Rivet 56107

METAL COMPONENTS – CABOCHON RIVETS

Cabochon Rivets are ideal for adding glamour to luxury leather goods, especially footwear and accessories. A close fit can be achieved with a flat, tiny back part and a smooth ergonomic appearance. They can be applied to various leather thicknesses without the need to pre-punch.

For all new Rivets and Back Parts, proper Application Tools are available for an easy and fast application.

Article Explanation

56 106 Cabochon Rivets ^{NEW!}



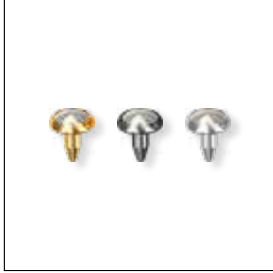
SS SS 16
M 1,440 PCS **120%**

56 106	SS	M	400%
Article number	Stone Size	Minimum order quantity in pieces (PCS)	% of actual size

Ordering Example & Product Variety Explanation

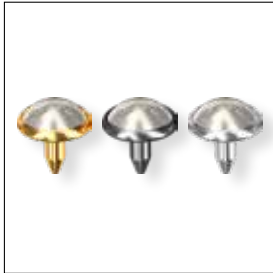
56 106	081	001	191
Article number	Color of casing	Color of Cabochon	Effect
	081 Gold Plating 086 Gunmetal Plating 095 Palladium Plating	Please see the relevant product matrix for all available reference codes.	

56 106 Cabochon Rivets ^{NEW!}



SS SS 16
M 1,440 PCS **120%**

56 107 Cabochon Rivets ^{NEW!}



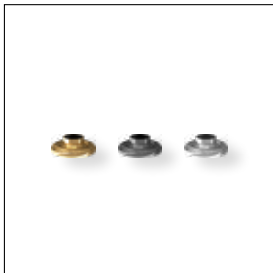
SS SS 34
M 144 PCS **120%**

<p>56 106 56 107</p>	<p>Color of Casing</p>	<p>081 Gold</p>	<p>086 Gunmetal</p>	<p>095 Palladium</p>
--	-------------------------------	-----------------	---------------------	----------------------

COLOR OF CABOCHONS	
Plain Colors	
● Jet (280)	■ ■ ■
Crystal Pearl Colors	
● Crystal Creampearl (001 291)	■ ■ ■
● Crystal Nacre (001 191)	■ ■ ■
● Crystal White Pearl (001 650)	■ ■ ■
Crystal Effects	
Transparent Effects	
● Crystal Golden Shadow (001 GSHA)	■ ■ ■
Color Effects	
Metallic Effects	
● Jet Hematite (280 HEM)	■ ■ ■

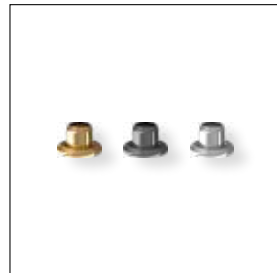
Back Parts

56 198 Back Part ^{NEW!}



M 1,440 PCS **120%**

56 199 Back Part ^{NEW!}



M 144 PCS **120%**

Back Part 56198 fits XIRIUS Flat Back Rivets 56101 and 56102 and Cabochon Rivets 56106

Back Part 56199 fits XIRIUS Flat Back Rivets 56103, 56104, 56105 and Cabochon Rivet 56107

Tools for Fly Press

Required Application Tools	Upper Die	Vacuum Adapter ¹	Spare Part for Upper Die (insert) ²	Lower Die for application with Back Part:	Lower Die for application with Back Part:
				 56 198	 56 199
	Art. 9040/023		 Art. 9070/023	 Art. 9070/023	

56 101



Art. 9040/130 M8	Art. 9040/023	Art. 9040/132
Art. 9040/131 M6	-	

56 102



Art. 9040/133 M8	Art. 9040/023	Art. 9040/135
Art. 9040/134 M6	-	

56 103



Art. 9040/136 M8	Art. 9040/023	Art. 9040/138
Art. 9040/137 M6	-	

56 104



Art. 9040/139 M8	Art. 9040/023	Art. 9040/141
Art. 9040/140 M6	-	

56 105



Art. 9040/142 M8	Art. 9040/023	Art. 9040/144
Art. 9040/143 M6	-	

¹ When using Swarovski's fly press, tools with M8 thread and the corresponding vacuum adapter are necessary.

² The Spare Part (plastic insert) is incorporated into the Upper Die as standard. It should be changed when it becomes worn.

Required Application Tools	Upper Die	Vacuum Adapter ¹	Spare Part for Upper Die (insert) ²	Lower Die for application with Back Part:	Lower Die for application with Back Part:
					
	Art. 9040/023				
			Art. 9070/023	Art. 9070/023	

56 106

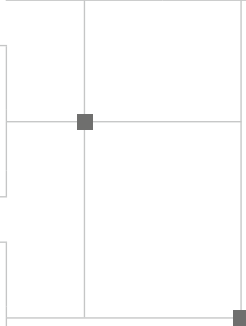


Art. 9040/145 M8	Art. 9040/023	Art. 9040/147
Art. 9040/146 M6	-	

56 107



Art. 9040/148 M8	Art. 9040/023	Art. 9040/150
Art. 9040/149 M6	-	



Care Instructions

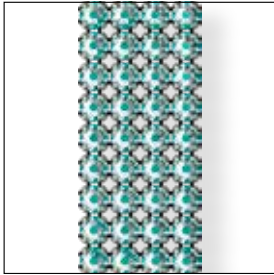
Find more detailed information on mechanical application and care instructions in the Application Manual on SIA or the B2B website, as well as in the product information for Metal Components in our Application Information System (AIS).

¹ When using Swarovski's fly press, tools with M8 thread and the corresponding vacuum adapter are necessary.

² The Spare Part (plastic insert) is incorporated into the Upper Die as standard. It should be changed when it becomes worn.

FLAT BACK BANDINGS

55 000

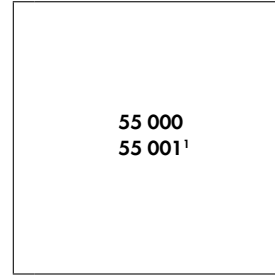


R	001-024	
SS	SS 20	
M	5 M	100%

55 001¹



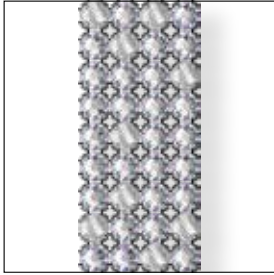
R	001	
SS	SS 20	
M	10 M	100%



Crystal Effects	
Crystal Lacquer ^{PRO} Effects	
Crystal Lacquer ^{PRO} DeLite Effects	
Crystal Laguna DeLite (001 L142D)	NEW!
Crystal Lavender DeLite (001 L144D)	NEW!
Crystal Ocean DeLite (001 L143D)	NEW!
Crystal Peach DeLite (001 L140D)	NEW!
Crystal Sunshine DeLite (001 L141D)	NEW!

Color of Thread / Net-edge	012 / 112 / 212 Black
	022 / 122 / 222 White
Color of Casing	081 Gold
	082 Silver
	086 Gunmetal
	088 Stainless Steel

55 300 Flat Back Banding

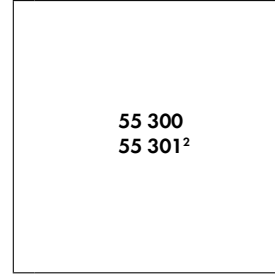


R	001-024	
SS	SS 16	
M	5 M	100%

55 301 Flat Back Banding



R	001	
SS	SS 16	
M	10 M	100%



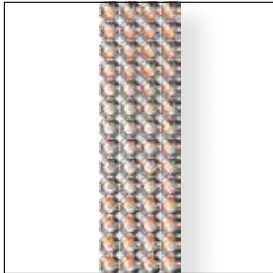
COLOR OF CRYSTALS	
Crystal Effects	
Crystal Lacquer ^{PRO} Effects	
Crystal Lacquer ^{PRO} DeLite Effects	
Crystal Laguna DeLite (001 L142D)	NEW!
Crystal Lavender DeLite (001 L144D)	NEW!
Crystal Ocean DeLite (001 L143D)	NEW!
Crystal Peach DeLite (001 L140D)	NEW!
Crystal Sunshine DeLite (001 L141D)	NEW!

Color of Thread / Net-edge	012 / 112 / 212 Black
	022 / 122 / 222 White
Color of Casing	081 Gold
	082 Silver
	086 Gunmetal

¹ Art. 55 001 is not available with net-edge. When ordering one row with net-edge, art. 55 000 should be used.

² Art. 55 301 is not available with net-edge. When ordering one row with net-edge, art. 55 300 should be used.

55 500

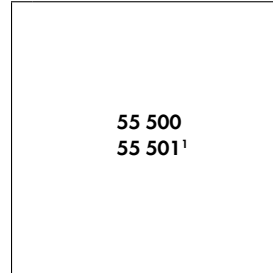


R	001-024	
SS	SS 12	
M	5 M	100%

55 501¹



R	001	
SS	SS 12	
M	10 M	100%

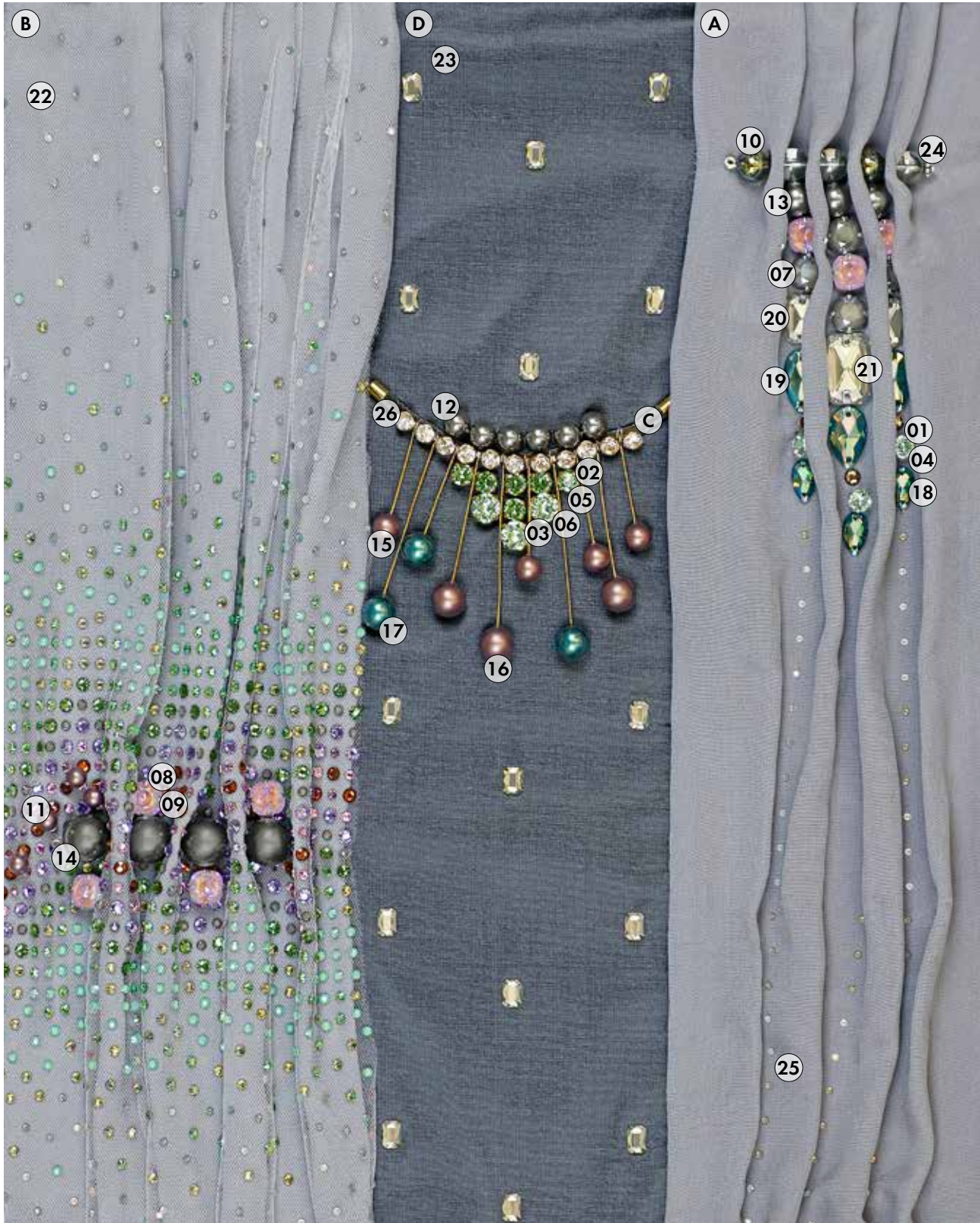


- Crystal Effects**
- Crystal Lacquer^{PRO} Effects**
- Crystal Lacquer^{PRO} DeLite Effects**
- Crystal Laguna DeLite (001 L142D)
- Crystal Lavender DeLite (001 L144D)
- Crystal Ocean DeLite (001 L143D)
- Crystal Peach DeLite (001 L140D)
- Crystal Sunshine DeLite (001 L141D)

Color of Thread / Net-edge	012 / 112 / 212 Black	Color of Casing	081 Gold	086 Gummel
	022 / 122 / 222 White		082 Silver	
NEW!		NEW!		NEW!
NEW!		NEW!		NEW!
NEW!		NEW!		NEW!
NEW!		NEW!		NEW!
NEW!		NEW!		NEW!

¹ Art. 55 501 is not available with net-edge. When ordering one row with net-edge, art. 55 000 should be used.

TREND FLAG THE SERENITY OF BEING



TREND FLAG THE SERENITY OF BEING

- ① **1088** SS 29 238 F
- ② **1088** SS 29 360 F
- ③ **1088** SS 39 238 F
- ④ **1088/S** SS 30 3PH2OH
- ⑤ **1088/S** SS 30 3PH2O3
- ⑥ **1088/S** SS 39 3PH2O3
- ⑦ **4470** 10 mm 001 L111S
- ⑧ **4470** 10 mm 001 L144D **NEW**
- ⑨ **4470/S** 10 mm 3PH2OH
- ⑩ **5028/4** 10 mm 001 IRIG
- ⑪ **5810** 6 mm 001 951
- ⑫ **5810** 8 mm 001 617
- ⑬ **5810** 10 mm 001 617
- ⑭ **5811** 14 mm 001 617
- ⑮ **5818** 8 mm 001 951
- ⑯ **5818** 10 mm 001 951
- ⑰ **5818** 10 mm 001 2004
- ⑱ **3230** 12x7 mm 215 SHIM F
- ⑲ **3230** 18x10.5 mm 215 SHIM F
- ⑳ **3252** 14x10 mm 001 SSHA F
- ㉑ **3252** 20x14 mm 001 SSHA F
- ㉒ **911949** Transfer Special Motif (390/234/214SHIM/001L115S/001L111S/212/283/360/220)
- ㉓ **911950** Transfer Special Motif (001SSHA)
- ㉔ **911951** Transfer Special Motif (096)
- ㉕ **911952** Transfer Special Motif (096/234/383/284)
- ㉖ **127000S2400C** K13 1088 F 001

MATERIAL INFORMATION

- Ⓐ Silk
- Ⓑ Tulle
- Ⓒ Velvet Mix
- Ⓓ Silk Doupion

SEGMENT FLAG LEATHER



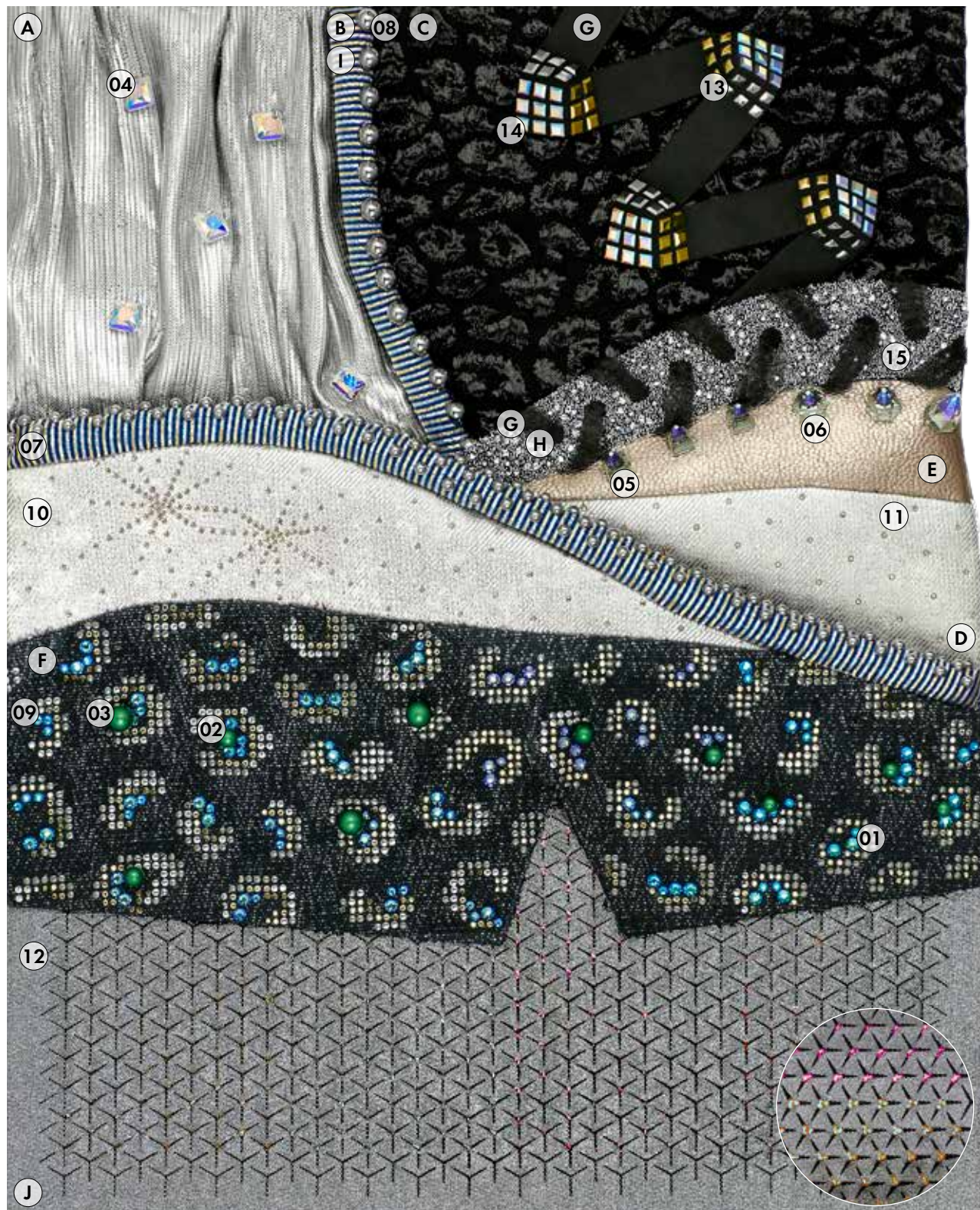
SEGMENT FLAG LEATHER

- ① **4120** 18x13 mm 001 L106S
- ② **4120/S** 18x13 mm 3PH2OH
- ③ **4127** 30x22 mm 001 L106S
- ④ **4327** 30x20 mm 001 L144D **NEW**
- ⑤ **4327/S** 30x20 mm 3PH2O3
- ⑥ **4470** 10 mm 001 L144D **NEW**
- ⑦ **4470/S** 10 mm 3PH2OH
- ⑧ **4470/S** 10 mm 3PH2O3
- ⑨ **4707** 13.6x8.6 mm 001 F
- ⑩ **4707/S** 13.6x8.6 mm 3PH2OH
- ⑪ **5811** 14 mm 001 969
- ⑫ **912381** Transfer Special Motif (R7045/001954/001L144D/001L144D) **NEW**
- ⑬ **913286** Transfer Special Motif (001954/001650/001650)
- ⑭ **912383** Transfer Special Motif (001L144D) **NEW**
- ⑮ **912384** Transfer Special Motif (001650/001L144D) **NEW**
- ⑯ **912387** Transfer Special Motif (001650)
- ⑰ **713484** Crystal Fine Rocks Special Motif (C010 001SSHA)
- ⑱ **713485** Crystal Fine Rocks Special Motif (C010 001MFCHR)
- ⑲ **713485** Crystal Fine Rocks Special Motif (C010 360)
- ⑳ **713652** Crystal Fine Rocks Special Motif (C010 319)
- ㉑ **54001** 082 001
- ㉒ **54001** 082 001 (C) 650
- ㉓ **54002** 082 215
- ㉔ **54003** 082 280 HEM
- ㉕ **56102** 095 001 **NEW** (not visible)
- ㉖ **56103** 081 001 AB **NEW**
- ㉗ **56103** 095 001 SSHA **NEW**
- ㉘ **56105** 086 001 **NEW**
- ㉙ **56106** 095 001 191 **NEW**
- ㉚ **56107** 081 001650 **NEW**
- ㉛ **104305** Flat Back Banding Special Motif (012 082 001L106S)
- ㉜ **127000**P2400C C1H 1088 F 215

MATERIAL INFORMATION

- Ⓐ 3D Print
- Ⓑ Leather
- Ⓒ Lamb Nappa
- Ⓓ Silk
- Ⓔ Poplin

TREND FLAG THE JOY OF EXPRESSION



TREND FLAG THE JOY OF EXPRESSION

- ① **5810** 5 mm 001 2014 **NEW**
- ② **5810** 6 mm 001 2014 **NEW**
- ③ **5810** 8 mm 001 2014 **NEW**
- ④ **6431** 11.5 mm 001 AB **NEW**
- ⑤ **3296** 7x7 mm 215 SHIM F **NEW**
- ⑥ **3297** 10x10 mm 215 SHIM F **NEW**
- ⑦ **2081/2** SS16 001 LTCH G_PRHF
- ⑧ **2081/2** SS34 001 LTCH G_PRHF
- ⑨ **13411** 086/092/001SSHA/001LTCH/001L132D/001L143D/001L142D/001L132D/001L143D/001L142D **NEW**
- ⑩ **13412** 001SSHA
- ⑪ **912136** Transfer Special Motif (001SSHA)
- ⑫ **912140** Transfer Special Motif (542/001L144D/001METSH/001SSHA/001L140D/502/001L141D/261) **NEW**
- ⑬ **912141** Transfer Special Motif (091/092/001AB)
- ⑭ **912142** Transfer Special Motif (001AB/001LTCH/001DOR)
- ⑮ **781032** Crystal Fine Medley Special Motif (012 001CAL/001CAL) **NEW**

MATERIAL INFORMATION

- Ⓐ Lame silver
 - Ⓑ Lame
 - Ⓒ Matelassé
 - Ⓓ Denim
 - Ⓔ Leather
 - Ⓕ Twill
 - Ⓖ Alcantara®
 - Ⓗ Tulle
 - Ⓘ Cord
 - Ⓙ Jersey
-

SEGMENT FLAG READY TO WEAR & EVENING WEAR



SEGMENT FLAG READY TO WEAR & EVENING WEAR

- 01 **4799** 14x14.3 mm 001 VM F **NEW**
- 02 **4799** 20x20.4 mm 001 L142D **NEW**
- 03 **5810** 4 mm 001 2014 **NEW**
- 04 **5810** 6 mm 001 2014 **NEW**
- 05 **6431** 11.5 mm 001 SINI **NEW**
- 06 **6431** 16 mm 001 SINI **NEW**
- 07 **13408** 001 METBL/001L143D/001L134S **NEW**
- 08 **13409** 070/070/070/280LTCHZ/280LTCHZ/280LTCHZ
- 09 **13410** R9005/001 METBL/539SHIM/502/001 METSH/360/223SHIM/502SHIM/360SHIM
- 10 **912151** Transfer Special Motif (502/539SHIM/001L132D/001L130D/001 METBL/229SHIM/360SHIM)
- 11 **912155** Transfer Special Motif (001SSHA/001L140D/542/502/539SHIM/001L141D/001 METSH/261) **NEW**
- 12 **912156** Transfer Special Motif (082/092/502SHIM/001SSHA/360SHIM/001 METSH/539SHIM/223SHIM)
- 13 **619080** Crystal Fabric Special Motif (010 001CAL)
- 14 **619080** Crystal Fabric Special Motif (012 280HEM)
- 15 **56103** 081 001AB **NEW**
- 16 **56104** 095 001AB **NEW**

MATERIAL INFORMATION

- A Metallic Jersey
 - B Alcantara®
 - C Crêpe Satin
 - D Tulle
 - E Zig-Zag Lurex
 - F Tulle/Velvet Mix
 - G Diadem Lame
 - H Satin Stretch Mix
-

TREND FLAG THE SURPRISE OF THE UNEXPECTED



TREND FLAG THE SURPRISE OF THE UNEXPECTED

- 01 **4470** 10 mm 001 L140D **NEW**
- 02 **4470** 10 mm 001 L141D **NEW**
- 03 **4470** 10 mm 001 L142D **NEW**
- 04 **4470** 10 mm 001 L143D **NEW**
- 05 **4470** 10 mm 001 L144D **NEW**
- 06 **4470/S** 10 mm 3PH2OH
- 07 **5000** 3 mm 001 AB
- 08 **5000** 4 mm 001 AB
- 09 **5328** 2.5 mm 001 AB
- 10 **5950** 15 mm 001 MOL STEEL
- 11 **5950** 30 mm 001 MOL STEEL
- 12 **5951** 8 mm 001 MOL **NEW**
- 13 **6431** 11.5 mm 001 **NEW**
- 14 **6431** 16 mm 001 **NEW**
- 15 **912207** Transfer Special Motif (080/001L140D/001L144D) **NEW**
- 16 **912208** Transfer Special Motif (001L141D) **NEW**
- 17 **913433** Transfer Special Motif (001L142D) **NEW**
- 18 **913435** Transfer Special Motif (001L142D) **NEW**
- 19 **912211** Transfer Special Motif (R1018)
- 20 **619272** Crystal Fabric Special Motif (C012 001PARSH)
- 21 **619273** Crystal Fabric Special Motif (O10 001AB)
- 22 **713790** Crystal Fine Rocks Special Motif (O10 281)
- 23 **781033** Crystal Fine Medley Special Motif (O12 001PARSH/001PARSH) **NEW**
- 24 **54001** 081 001SCGR
- 25 **54002** 081 001SCGR
- 26 **54003** 081 001SCGR
- 27 **56105** 081 001AB **NEW**
- 28 **2081/2** SS 16 001651 W_PRHF
- 29 **2081/2** SS 16 001769 W_PRHF
- 30 **2081/2** SS 16 001954 W_PRHF

MATERIAL INFORMATION

- (A) Technical fabric
- (B) Plastic
- (C) Wevenit
- (D) Softshell
- (E) Polyester
- (F) Grosgrain Ribbon

SEGMENT FLAG CASUAL TEXTILE & ACCESSORIES



SEGMENT FLAG CASUAL TEXTILE & ACCESSORIES

- 01 **4470** 10 mm 001 L144D ^{NEW}
- 02 **4470/S** 10 mm 3PH2OH
- 03 **4699** 20x22.9 mm 001 F ^{NEW}
- 04 **5000** 4 mm 234
- 05 **5810** 2 mm 001 650
- 06 **5810** 8 mm 001 160
- 07 **5810** 8 mm 001 954
- 08 **5810** 12 mm 001 2004
- 09 **6431** 11.5 mm 001 ^{NEW}
- 10 **6431** 16 mm 001 ^{NEW}
- 11 **13405** 001AB/001L144D/001L140D/001AB/001AB ^{NEW}
- 12 **13406** 001L141D/001/001L141D/001L106S/001 ^{NEW}
- 13 **13407** 001L126S/001L144D ^{NEW}
- 14 **912214** Transfer Special Motif (001AB/001L144D/001L140D) ^{NEW}
- 15 **912217** Transfer Special Motif (R2003/001L140D/001L141D) ^{NEW}
- 16 **912220** Transfer Special Motif (001L142D/001L143D/001L144D) ^{NEW}
- 17 **912221** Transfer Special Motif (001L144D) ^{NEW}
- 18 **912222** Transfer Special Motif (246/001L106S)
- 19 **912262** Transfer Special Motif (001L143D/001AB/001L142D) ^{NEW}
- 20 **713883** Crystal Fine Rocks Special Motif (010 293)
- 21 **713883** Crystal Fine Rocks Special Motif (010 319)
- 22 **713795** Crystal Fine Rocks Special Motif (C010 259SHIM)
- 23 **781031** Crystal Fine Medley Special Motif (010 001AB/001AB) ^{NEW}
- 24 **781031** Crystal Fine Medley Special Motif (010 001GSHA/001GSHA) ^{NEW}
- 25 **56103** 081 001AB ^{NEW}

MATERIAL INFORMATION

- (A) Technical fabric
- (B) Linen-Silk Mix
- (C) Alcantara®
- (D) Plastic
- (E) Silk-Satin Mix
- (F) Cotton stretch

TREND FLAG THE EXCITEMENT OF CREATIVITY



TREND FLAG THE EXCITEMENT OF CREATIVITY

- ① **4122** 8x6 mm 001 L130D
- ② **4122** 8x6 mm 001 L132D
- ③ **4122/S** 8x6 mm 3PH2OH
- ④ **4122** 14x10.5 mm 001 L115S
- ⑤ **4122/S** 14x10.5 mm 3PH2OH
- ⑥ **5000** 6 mm 280
- ⑦ **5000** 7 mm 001
- ⑧ **5000** 8 mm 231
- ⑨ **5810** 6 mm 001 709
- ⑩ **6000** 13x6.5 mm 001
- ⑪ **6010** 13x6.5 mm 231
- ⑫ **6106** 16 mm 001
- ⑬ **6106** 16 mm 211 SHIM
- ⑭ **6106** 16 mm 215 SHIM
- ⑮ **6106** 16 mm 360 SHIM
- ⑯ **6565** 18 mm 001 LTCHZ
- ⑰ **2081/2** SS 34 001 LTCH G_PRHF
- ⑱ **2081/2** SS 16 001 LTCH G_PRHF
- ⑲ **2408/4** 8 mm 280 HEM G_PRHF
- ⑳ **911877** Transfer Special Motif (001)
- ㉑ **911879** Transfer Special Motif (R1018/001L134S/R1018) **NEW**
- ㉒ **911879** Transfer Special Motif (R1018/001L142D/R1018) **NEW**
- ㉓ **911879** Transfer Special Motif (R1018/539SHIM/R1018) **NEW**
- ㉔ **911879** Transfer Special Motif (R1018/001L143D/R1018) **NEW**
- ㉕ **911880** Transfer Special Motif (R1018/R3020/001SCGR/001L132D/001L143D/276) **NEW**
- ㉖ **911881** Transfer Special Motif (001TRAHFT)
- ㉗ **704991** Crystal Fine Rocks Special Motif (010 267)
- ㉘ **781034** Crystal Fine Medley Special Motif (012 001MLGLD/280) **NEW**

MATERIAL INFORMATION

- Ⓐ Polyester
- Ⓑ Cotton
- Ⓒ Jacquard Jersey
- Ⓓ Jacquard Stretch
- Ⓔ Cotton Knit
- Ⓕ Cotton Elastane
- Ⓖ Alcantara®

SEGMENT FLAG DENIM & OTHER FABRICS



SEGMENT FLAG DENIM & OTHER FABRICS

- ① **4470** 10 mm 001 L112S F
- ② **4470** 10 mm 001 L142D **NEW**
- ③ **4470** 10 mm 001 L143D **NEW**
- ④ **4470/S** 10 mm 3PH2OH
- ⑤ **5000** 3 mm 001
- ⑥ **2078** SS34 001 L134S HFT
- ⑦ **3296** 7x7 mm 001 VOLC F **NEW**
- ⑧ **3296** 7x7 mm 215 SHIM F **NEW**
- ⑨ **3296** 10x10 mm 215 SHIM F **NEW**
- ⑩ **3297** 7x7 mm 001 BLSH F **NEW**
- ⑪ **913542** Transfer Special Motif (001191/001191/001/001)
- ⑫ **912114** Transfer Special Motif (R9003)
- ⑬ **912117** Transfer Special Motif (001L141D) **NEW**
- ⑭ **912120** Transfer Special Motif (001SSHA)
- ⑮ **912121** Transfer Special Motif (R5003/R9003)
- ⑯ **912122** Transfer Special Motif (280HEM/001/280LTCHZ/280/001) **NEW**
- ⑰ **912124** Transfer Special Motif (001L143D) **NEW**
- ⑱ **912124** Transfer Special Motif (001L134S) **NEW**
- ⑲ **912126** Transfer Special Motif (202/001) **NEW**
- ⑳ **912128** Transfer Special Motif (001/202/001) **NEW**
- ㉑ **912130** Transfer Special Motif (280LTCHZ)
- ㉒ **912331** Transfer Special Motif (001191)
- ㉓ **913434** Transfer Special Motif (R5009/001SCGR/001L143D/001L143D) **NEW**
- ㉔ **57000** 001 012 001CHRM
- ㉕ **57000** 001 012 001HEL
- ㉖ **62010** 002 010 001L112S **NEW**
- ㉗ **781035** Crystal Fine Medley Special Motif (012 001GSHA/001GSHA) **NEW**
- ㉘ **56102** 086 001SSHA **NEW**
- ㉙ **56106** 095 001191 **NEW**
- ㉚ **2081/2** SS 16 001 LTCH G_PRHF
- ㉛ **2081/2** SS 16 001 191 W_PRHF

MATERIAL INFORMATION

- Ⓐ Cotton
- Ⓑ Cotton-Silk Mix
- Ⓒ Silk
- Ⓓ Jersey
- Ⓔ Denim
- Ⓕ Denim-Cotton Mix

SWAROVSKI OFFICES & PARTNERS

EUROPE

For Austria, Germany, Switzerland, Benelux, Scandinavia, UK, Ireland, France, Spain, Portugal, Greece, Africa and Eastern Europe, please contact Swarovski for Professionals Team on behalf of D. Swarovski Distribution GmbH:
sp.infoli@swarovski.com

SWAROVSKI GLOBAL BUSINESS SERVICES SP. Z O.O.

ul. Norwida 5
80-280 Gdansk, Poland
NIP: 583322776
REGON: 336160094
swarovskigroup.com

D. SWAROVSKI DISTRIBUTION GMBH

Swarovskistraße 30
6112 Wattens

Austria
Phone: +43 (0) 5224 500-0
Fax: +43 (0) 5224 52335
sp.infoli@swarovski.com

SWAROVSKI POLAND SP. Z O.O.

ul. Parkowa 19 apt. 14
00-759 Warsaw
Poland

SWAROVSKI INTERNAZIONALE

D'ITALIA S.P.A.
SOCIETA' A SOCIO UNICO
Via Giorgio Giulini n.3
20123 Milano
Italy
Phone: +39 02 722601
sp.it@swarovski.com

SWAROVSKI OOO

BC "Sadovaya Plaza"
Dolgorukovskaya str., h.7, floor 12
127006 Moscow
Russia
Phone: +7 (495) 789 68 44
sp.infoli@swarovski.com

SWAROVSKI KRISTAL TIC.LTD.STI.

Abdi İpekçi Cad. Reasürans Han E Blok,
No:57 Kat:5
34367 Nişantaşı Şişli, Istanbul
Turkey
Phone: +90 (0) 212 225 44 29
Fax: +90 (0) 212 225 27 99
sp.infoli@swarovski.com

MIDDLE EAST

SWAROVSKI MIDDLE EAST FZE
P.O. Box 17128, Jebel Ali Free Zone
Dubai
United Arab Emirates
Phone: +971 4 8032047
Fax: +971 4 881 5623
farah.zaroug@swarovski.com
palak.bhati@swarovski.com

SWAROVSKI INDIA PVT. LTD.

1st Floor, Building 10C
DLF Cyber City
DLF Phase 2
Gurgaon - 122002
India
Phone: +91 (124) 469 8200
Fax: +91 (124) 469 8277
customer_service.in@swarovski.com

NORTH & SOUTH AMERICA

SWAROVSKI CRYSTAL COMPONENTS LTDA.

Alameda Itu, 852 - 13° Andar
01421-001 São Paulo - SP
Brazil
Phone: +55 11 3088 8821 (ext. 121)
Fax: +55 11 3088 5976
comercial.br@swarovski.com

SWAROVSKI NORTH AMERICA LTD.

1 Kenney Drive, Cranston
Rhode Island 02920-4400
USA
Phone: +1 401 463 6400
Fax: +1 401 463 4707
Toll free: 1 800 463 0849
sp.sna@swarovski.com

SWAROVSKI NORTH AMERICA LTD.

Los Angeles Showroom,
California Mart
110 E. 9th Street, Suite B771
Los Angeles, CA 90079-2827
USA
Phone: +1 213 489 2393
Fax: +1 213 489 1961

SWAROVSKI CRYSTAL S.A. DE C.V., MEXICO

Av. Ejército Nacional No. 579
Piso 11, Local A
Col. Granada
Del. Miguel Hidalgo
C.P. 11520
México D.F.
Phone: +5255 5000 0641

ASIA

SWAROVSKI HONG KONG LTD.

9th Floor, 1063 King's Road
Quarry Bay
Hong Kong
Phone: +852 2969 6441
Fax: +852 2807 1902
sp.infohk@swarovski.com

SWAROVSKI (GUANGZHOU) TRADING COMPANY LTD.

Room 02-07, 17F, Central Tower
No. 5, Xiancun Road,
Zhujiang New Town,
Tianhe District, Guangzhou 510623
China
Phone: +86 20 3813 2188
Fax: +86 20 3810 2278
Toll Free: +86 400 880 1744
sp.infofn@swarovski.com

SWAROVSKI (GUANGZHOU) TRADING COMPANY LTD.

Beijing Liaison Office
Room 2001-2002,
20/F, Tower B, Gemdale Plaza,
No. 91, Jianguo Road,
Chaoyang District,
Beijing 100020
China
Phone: 010-65829773

SWAROVSKI (GUANGZHOU) TRADING COMPANY LTD.

Shanghai Liaison Office
Room 1602, The Headquarters Building
No. 168, Xi Zang Road (M)
Shanghai 200001
China
Phone: +86 21 2306 9945
Fax: +86 21 6372 9180

SWAROVSKI (GUANGZHOU) TRADING COMPANY LTD.

Qingdao Liaison Office
Art & Technology Space Room
No. 1-506
No. 63, Haier Road
Qingdao 266061
China
Phone: +86 532 8099 9595
Fax: +86 532 8099 9596

SWAROVSKI (GUANGZHOU) TRADING COMPANY LTD.

Yiwu Liaison Office
Room 8911, Xinguang International
Business Building
No. 1399, Chouzhou Road(North),
Yiwu City, 322000
Zhejiang Province
China
Phone: +86 579 8559 0903
Fax: +86 579 8559 0707

SWAROVSKI (GUANGZHOU) TRADING COMPANY LTD.

Shenzhen Liaison Office
Room 13G, Tower C, NEO Building,
6009 Shennan Avenue, Futian District
ShenZhen 518048
China
Phone: +86 755 23605750
Fax: +86 755 23605735

SWAROVSKI TAIWAN LIMITED TAIWAN BRANCH

3/F, No. 27, Chung-Shan North Road
Section 1, Taipei 104
Taiwan, R.O.C.
Phone: +886 2 2100 2611
Fax: +886 2 2100 2622
sp.infotw@swarovski.com

SWAROVSKI SINGAPORE TRADING PTE. LTD.

2, Alexandra Road
#03-01, Delta House
Singapore 159919
Singapore
Phone: +65 6661 6333
Fax: +65 6274 8177
sp.infosg@swarovski.com

PT CRYSTALLIZED ELEMENTS

The Plaza Office Tower, 41st floor
Jl. M. H. Thamrin, Kav. 28-30,
Jakarta 10350
Indonesia
Phone: +62 21 2992 6726
Fax: +62 21 2992 6888
ptcrystallized.id@swarovski.com

SWAROVSKI SINGAPORE PTE. LTD.

Room 601, Citilight Tower,
45 Vo Thi Sau Street,
Da Kao Ward, District 1,
Ho Chi Minh City
Postal: 70000
Phone: +84 (028) 7308 0579
svnoffice@swarovski.com

SWAROVSKI (THAILAND) LTD.

849 Vorawat Building, 16th Floor,
Room 1601 - 1602,
Silom Road, Silom, Bangrak, Bangkok
10500 Thailand
Phone: +662 635 1990
Fax: +662 635 1585
sthspmarketing@swarovski.com

SWAROVSKI KOREA LTD.

BaekYoung Building 13F(SP)
(6 Cheongdam-dong) 456 Dosan-daero,
Gangnam-gu, Seoul 06062,
Korea
Phone: +82 2 6930 9974
Fax: +82 2 3416 0336
aileen.kwak@swarovski.com

SWAROVSKI JAPAN LTD.

Ichibancho Tokyu Building 12F,
21 Ichiban-cho, Chiyoda-ku,
Tokyo, 102-0082
Japan
Phone: +81 3 3262 3012
Fax: +81 3 3262 3723
sp.infoJP@swarovski.com

AUSTRALIA & NEW ZEALAND**SWAROVSKI INTERNATIONAL
(AUSTRALIA) PTY. LTD.**

1/4D Huntley St
Alexandria NSW 2015
Australia
Phone: +61 2 8345 7200
Fax: +61 2 9313 6506
elementsenquiries.sau@swarovski.com

**SWAROVSKI GLOBAL BUSINESS
SERVICES SP. Z O.O.**

ul. Norwida 5
80-280 Gdansk, Poland
sp.infoli@swarovski.com

**SWAROVSKI COMMUNICATION
& CREATIVE SERVICE CENTERS
WORLDWIDE****LONDON****CORPORATE BRANDING &
COMMUNICATION****SWAROVSKI CRYSTAL BUSINESS**

21 Sackville Street, 2nd Floor
London, W1S 3DN,
United Kingdom
Phone: +44 (0) 20 7255 8400
www.swarovskigroup.com
www.atelierswarovski.com

LOS ANGELES**SWAROVSKI NORTH AMERICA LTD.**

Los Angeles Showroom,
California Mart
110 E. 9th Street, Suite B771
Los Angeles, CA 90079-2827
USA
Phone: +1 213 489 2393
Fax: +1 213 489 1961

**SWAROVSKI CORPORATE
COMMUNICATIONS UNIT**

8560 W. Sunset Blvd., Suite 200
West Hollywood, CA 90069
USA
Phone: 310-652-0089 x3813
Fax: 310-652-0951

DUBAI**SWAROVSKI MIDDLE EAST FZE**

P. O. Box 17128, Jebel Ali Free Zone
Dubai, UAE
United Arab Emirates
Phone: +971 4 881 6562
Fax: +971 4 881 5623
farah.zaroug@swarovski.com
palak.bhati@swarovski.com

SWAROVSKI CREATIVE CENTER

Dubai Design District
Building 7, Unit M04, Mezzanine Level
Ras Al Khor Road
Dubai, UAE
Phone +971 56 500 4339
Olivia.tang@swarovski.com

SINGAPORE**CORPORATE BRANDING &
COMMUNICATION & ATELIER
SWAROVSKI ASIA PACIFIC****SWAROVSKI MANAGEMENT PTE LTD**

2 Alexandra Road
#03-02 Delta House
Singapore 159919
Singapore
Tel.: +65 6661 6333
atelierapac@swarovski.com

MILAN**SWAROVSKI INTERNAZIONALE
D'ITALIA S.P.A.**

SOCIETA' A SOCIO UNICO
Via Giorgio Giulini n.3
20123 Milano
Italy
Phone: +39 02 722601
stefania.fedeli@swarovski.com

NEW YORK**SWAROVSKI CREATIVE SERVICE
CENTER**

10 E 53rd Street, 26th Floor
New York, NY 10022
USA
swarovski.com/professional
crystals-from-swarovski.com

PARIS**SWAROVSKI FRANCE**

13^{ter}, Boulevard Berthier
75017 Paris
France
Phone: +33 1 4476 1515
accueil.poissonniere@swarovski.com

**CORPORATE BRANDING &
COMMUNICATIONS PARIS**

13^{ter}, Boulevard Berthier
75017 Paris
France
Phone: +33 (0) 1 42 56 29 84
Fax: +33 (0) 1 45 61 17 67
Nadine.mao@swarovski.com

SÃO PAULO**SWAROVSKI CRYSTAL COMPONENTS
LTDA.**

Alameda Itu, 852 - 13° Andar
01421-001 São Paulo - SP
Brazil
Phone: +55 11 3088 8821
Fax: +55 11 3088 5976
comercial.br@swarovski.com

WATTENS**D. SWAROVSKI KG**

Lindenstraße 1
6112 Wattens
Austria
Phone: +43 5224 500 3307
Fax: +43 5224 501 3307
sandra.oconnor@swarovski.com

**SWAROVSKI TREND &
APPLICATION CENTERS
WORLDWIDE****SWAROVSKI HONG KONG LTD.**

9th Floor, 1063 King's Road,
Quarry Bay, Hong Kong
Phone: +852 2969 6441
Fax: +852 2807 1902
sp.infohk@swarovski.com

BEIJING

Rm 2001-2002, 20 F, Tower B,
Gemdale Plaza, No. 91,
Jianguo Road, Chaoyang District
Beijing 100020
China
Tel: 010-65829773

SHANGHAI

The Headquarters Building
No. 168, Xi Zang Road (M),
Room 1602
Shanghai 200001
China
Phone: +86 21 2306 9945
Fax: +86 21 6372 9180

GUANGZHOU

Room 02-07, 17F, Central Tower
No. 5, Xiancun Road,
Zhujiang New Town,
Tianhe District, Guangzhou 510623
China
Phone: +86 20 3813 2188
Fax: +86 20 3810 2278
Toll Free: +86 400 880 1744

BANGKOK**SWAROVSKI (THAILAND) LTD.**

849 Vorawat Building, 16th Floor,
Room 1601 - 1602,
Silom Road, Silom, Bangrak, Bangkok
10500
Thailand
Phone: +662 635 1990
Fax: +662 635 1585
sirikarn.ngamboonsin@swarovski.com

TOKYO JAPAN TAC**SWAROVSKI JAPAN LTD.**

c/o Schenker-Seino Co. Ltd.
Ohi Logistics Center
4-10-8 Tokai
Ohta-ku, Tokyo, 143-0001
Japan
Phone: +81 3 5755 1033

GENERAL WARNING

Loose crystals may present a small parts hazard to young children, particularly children under three years old. Depending on the size of the crystal and any attached material (such as glue, fabric, etc.), children may choke on, inhale, swallow, or insert the crystal into their noses. Magnetic products with crystal applications pose a particular risk of serious intestinal injury if ingested. The application techniques as stated in the Application Manual do not guarantee that crystals will not come loose or chip. For each application, the manufacturer must determine whether the product meets the relevant requirements related to small parts hazards and assess any risk it may pose, in particular to small children. Failure to follow Swarovski's care instructions may result in damage to the crystal, which could pose a risk of laceration or other harm.

Warning for Tableware

Application of loose crystals to tableware presents a potential risk of aspiration, choking, swallowing, or tooth damage should crystals become loose. To reduce this risk, crystals should never be applied to any tableware surface likely to come in contact with food or the mouth, and crystals should never be placed on any tableware intended for use by children. Tableware with crystals intended for decorative use only should be marked as such. To avoid dishwasher damage, tableware decorated with crystals should be washed by hand. The application techniques or suggestions in this manual do not guarantee that crystals will not come loose. For each application, the manufacturer must determine whether the product meets relevant requirements related to small parts hazards or use in food contact items and assess any risk it may pose to users.

The use of crystals (which may contain restricted substances deemed hazardous under local laws) and adhesives on tableware is subject to legal restrictions in specific countries. The customer is fully responsible for complying with these country-specific provisions and shall defend, indemnify, and hold Swarovski harmless from any and all third-party claims based on product liability or otherwise relating to uses of Swarovski products and waives all its own claims against Swarovski.

Notice for Application on Packaging

The use of crystal that may contain substances like lead, cadmium or hexavalent chromium, on packaging is subject to legal restrictions in specific countries including but not limited in regard to the total content of substances based on the proportion between crystal mass to the remaining weight of packaging. The customer is fully responsible for complying with these country-specific provisions and to pass on this information to his customers.

Care Instructions

Failure to follow Swarovski's care instruction may result in damage to the Swarovski product, which could pose a risk of laceration or other harm. Please be informed that all conventional laundering processes (household washing machine as well as professional dry-cleaning) have a considerable mechanical influence onto the garment, which is based on the rotation of the washing drum. The essential requirement for a safety laundering process is that the Swarovski products are properly applied without restrictions regarding the adherence of the Swarovski products. The bigger the size of the used Swarovski product is and the more Swarovski products are applied next to each other, the more a risk of damage has to be taken into consideration. Swarovski products are made of or incorporate crystal and therefore must be handled

with due care! Generally, to best protect the Swarovski products from breaking we recommend the use of a soft washing bag and to fill up the washing drum. Turning inside out before washing and selection of a gentle washing program, plus the use of mild detergents are important prerequisites to safeguard the quality of our Swarovski products. Our care instructions based on DIN EN ISO 3758 list up all Swarovski product groups as overview so that each used Swarovski product still needs to be judged in terms of its cleaning suitability for the intended purpose and finished product by the customer. Swarovski's recommendations are given according to the current state of our knowledge and Swarovski's determination of the qualification as textile application product. The customer is therefore fully responsible to determine the cleaning process applicable to the finished product, taking the Swarovski care instructions as well as those of third party materials into account. The variety of shape, cut, surface effect, size and application weight respectively amount of used Swarovski products are decisive for the determination of the suitable cleaning process. To be entirely safe customers respectively dry-cleaners usually take off Sew-on Stones, Buttons, etc. of bigger size before cleaning and re-apply them afterwards.

Unsuitable Applications

Crystals from Swarovski are intended for use in the fields of fashion, jewelry, accessories, textile products, and for interior décor. Due to their physical properties, crystals from Swarovski are unsuitable for other uses (e.g. gluing onto teeth, using crystals on or near mucous membranes, and other unsafe uses). The customer shall defend, indemnify and hold Swarovski harmless from any and all third-party claims based on product liability or otherwise relating to uses of Swarovski products purchased by the customer, and waives all its own claims.

Responsibility of User

Any oral, written, or test-based advice that Swarovski provides regarding techniques for application of its products are recommendations based on Swarovski's current knowledge and the information provided by its suppliers. Such advice does not discharge the customer from carrying out its own tests of techniques it proposes to use and their suitability for the intended application. The application, use, and processing of these techniques and products are solely the user's responsibility.





Change of Product

Swarovski reserves the right to modify the dimensions, shape, composition and concentration of components belonging to products that are referred to in this Product Information brochure. Furthermore, any applicable laws and regulations mentioned are subject to change, which is why Swarovski regularly publishes an updated version of the Product Information brochure containing facts, (application) instructions, and the current legal situation that is valid at the time of publication. References to compliance with such regulations as are stated above are based on their requirements as of the current date. Anyone seeking an in-depth understanding of the provisions should read the various laws in their entirety and/or seek advice from a legal counsel.






The customer must request and observe the valid version of the Product Information brochure before (re)ordering and using the products.

WHY SWAROVSKI

EXCELLENCE, THROUGH INNOVATION AND ORIGIN

 <p>X-Cut Advanced optical measurement and high-precision manufacturing deliver premium cuts characterized by unmatched brilliance.</p>	 <p>Platinum* Pro With its new advanced foiling technique, Swarovski has set a new standard in the lifespan of crystals.</p>
 <p>Hotfix Glue The variable temperatures at which Hotfix glue can be activated enable the application of crystals on a broad range of textiles.</p>	 <p>Crystals - Made in Austria The combination of innovation with sustainability and respect for individual wellbeing means that quality is always assured.</p>

PREMIUM, BY SERVICE AND DESIGN

 <p>Design Service Throughout its global network of Design Centers, Swarovski offers exceptional service provided by the industry's best creative talent.</p>	 <p>Application Service A comprehensive range of application services means customers benefit from the extensive experience of leading international experts, as well as internal specialists.</p>
 <p>Global Service Swarovski's Global Service Network provides customers with dedicated personal assistance on a local level.</p>	 <p>Designer Editions Creative collaborations with top designers result in exclusive cuts and unique designs for Swarovski crystals.</p>
 <p>Customized Service Choose new variations by going beyond Swarovski's tremendous standard assortment of crystal components and forward integrated elements.</p>	

COMPLIANCE, WITH INTEGRITY

 <p>Advanced Crystal Swarovski's patented lead-free** formula has changed the DNA of crystal while still offering the same sparkle, dependability, and variety for which Swarovski is famous.</p>	 <p>OEKO-TEX Oeko-Tex® Standard 100 Class II (direct contact with skin) certification creates confidence in chemical safety of textile applications.</p>
 <p>Clear Regular legal monitoring of chemical requirements and reasonable testing provide customers with the comfort of trust in Swarovski's products.</p>	 <p>Compliance Service Assessments regarding substance limitations as well as compliance information and advice to support customers in complying with relevant laws, regulations, and voluntary standards.</p>

* Silver mirror coated with a platinum-colored protective layer. | ** Crystal glass and all other materials containing 0.009% lead or less.

NOTES

NOTES

CREDITS

Page 14, 17, 25, 33, 41:

Photographer - Chiara Quadri

Production - Santaveronica

Page 41:

Shoe - Anita Quansah London

Page 25:

Belt - Schield srl

Page 14, 17:

Earrings - Schield srl

Page 33:

Rings - Schield srl

Page 15, 16, 24, 32, 40:

Gedebe srl

–

Content by Swarovski Professional Headquarters, Wattens

Creative Direction: Giovanna Battaglia Engelbert

Art Direction: in the headroom

Printed by RWF Frömel-Hechenleitner Werbeges. m. b. H

VALID FROM FEBRUARY 2019

Sys.No. 5499507

Content is subject to change without notice.

Errors and misprints excepted.

Please note, the actual products may deviate from the pictures in color and effect.

D. Swarovski Distribution GmbH, Swarovskistrasse 30, 6112 Wattens, Austria

© 2019 D. Swarovski Distribution GmbH. All rights reserved. Partial or total publication, transmission, copy or other duplication of texts, graphics, pictures etc.

that are to be found in this publication is forbidden without special consent by

D. Swarovski Distribution GmbH.

Swarovski® is a registered trademark of Swarovski AG.

Please visit our website for contact information: swarovski-professional.com



*Swarovski Professional is a certified member of RJC

