



THE NEW RESIDENT

INTERIOR INSPIRATIONS
2018

SWAROVSKI

THE NEW RESIDENT

Modern life has left us in a state of disarray. Dynamic, multilayered, but also chaotic and driven by a desire for instant gratification, we have too much stuff, receive too much information, and are constantly under pressure to perform.

We now feel the downside of having too much to handle, and we seek a new way to lead our lives. The quest for status, possessions and wealth no longer inspires us to move forward – instead we seek immersive experiences and individualized solutions.

Capturing and sharing memories of our own experiences gives us a sense of satisfaction and happiness. Living and working in shared spaces, seeking companionship, enjoying each other's presence, and acquiring products on an emotional basis, now feels right for us.

For our interiors, we aim to create individual homes that reflect our personal sense of what living means to us. Purpose, personal experience, and sustainability drive us toward a new era of living and being. Our homes become playgrounds in which we create new things, enjoy life, and let our senses roam free. We cocoon ourselves in spaces with welcoming textures and softening features. The way we illuminate our living environment plays a major role: subtle ambient lighting recalls the playful harmony of reflections on water. This quality is beautifully expressed in the softness of Tord Boontje's new collection Luminous Reflections.

Welcome to our Interior Inspirations 2018+.

THE NEW RESIDENT

INTERIOR INSPIRATIONS 2018

2 Introduction

3 Content

INSPIRATIONS

5 Build And Create

9 Remember And Enjoy

13 Sense And Experience

17 Reflect And Renew

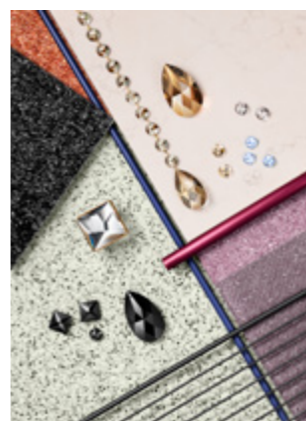
DESIGNER EDITION

21 Tord Boontje

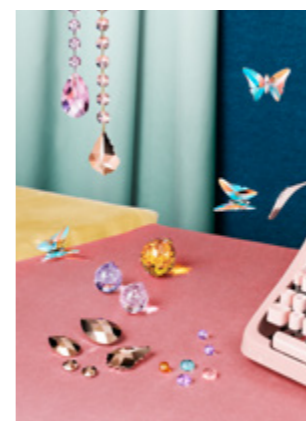
25 INNOVATIONS OVERVIEW

Content

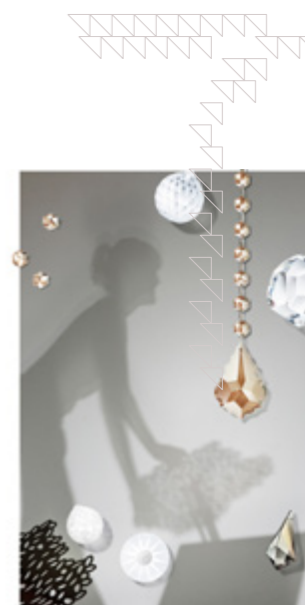
BUILD
AND
CREATE



REMEMBER
AND
ENJOY



SENSE
AND
EXPERIENCE



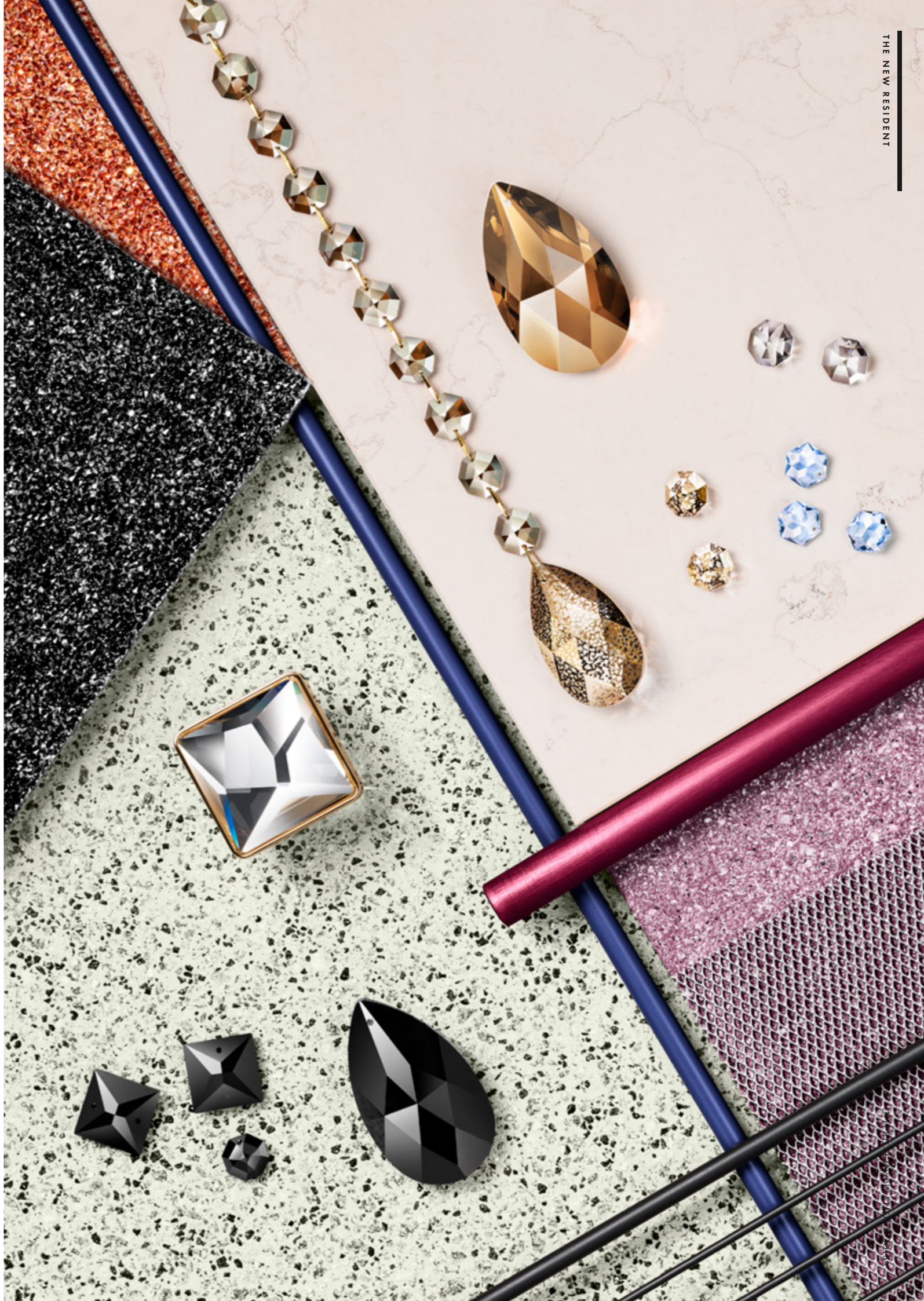
REFLECT
AND
RENEW



BUILD AND CREATE

BUILD AND CREATE

P-5.6



As our life expectancy increases to include additional phases, we opt for interior solutions that work today but may change tomorrow—just as we do.

A creative mentality takes center stage as we enjoy experimenting and designing our own interior spaces.



Versatility is key as design solutions become toolkits for our creativity, allowing us to alter and rebuild. Modular, multipurpose elements are functional and easy to combine. We elevate industrial materials to the status of design classics, where geometric shapes and minimalist forms allow us the freedom to change and re-create. Saturated basic colors reflect the versatility of this theme and subtle crystal shimmer creates fascinating contrasts.

SURFACES & SPACES

Industrial surfaces such as concrete, steel, and stone with coatings or even natural stone, lend a sense of longevity to interiors. Bold, honest materials combine with crystal in a basic and functional approach.



LIGHTING

As creators we love products that show their construction methods. Utilitarian, sturdy elements such as steel tubing, iron rods, textile panels, and tubular lighting meet geometric

Remember and ENJOY

REMEMBER AND ENJOY





SURFACES & SPACES

Surface manipulations merging crystal with wood, stone, metal, or synthetic materials play with openwork patterning and laser-carved elements. Spaces oscillate between geometric order and calculated asymmetry, while layered elements create additional interest.

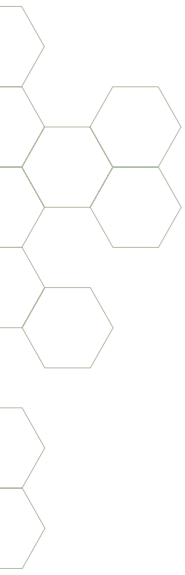


LIGHTING

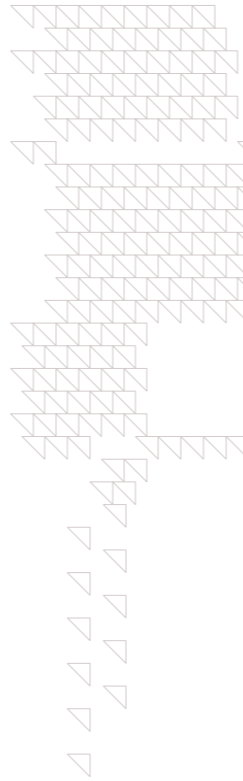
Bold 3D sculptural lighting designs use rods, beams and grids in gold, copper, steel and crystal combinations. Reflection and texture manipulations become important elements in lighting.

Gone are the days when we hastily look for the next new thing – we now seek consistency and we are drawn to a reinterpreted version of the past that feels comfortably familiar and at the same time different. Refreshed retro elements remind us of a time when the world seemed happier, brighter, less frantic, answering our need to think positively, cherish each moment, and enjoy life.

Streamlined round shapes and seductively cheeky colors evoke a modern yet bygone mood that is witty, playful, and sophisticated, giving us joy and uplifting our spirits. Curved lines and soft materials reflect a cheeky character that speaks to us on an emotional level. We are drawn to the odd, imbalanced positioning of elements that add to the charm of this trend. Matte and shiny alternate, as sparkling crystal accents lend a sense of spirited confidence to interiors.



SENSE AND EXPERIENCE



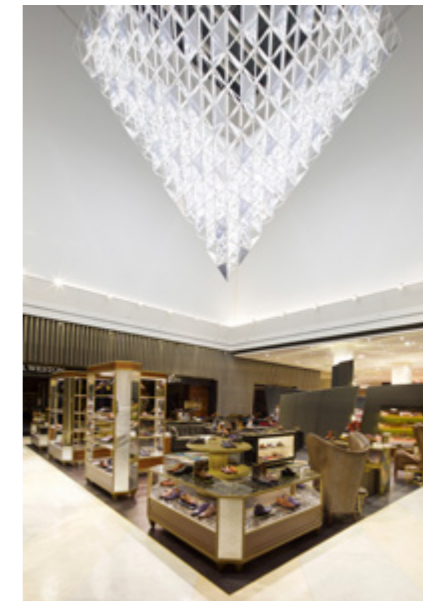
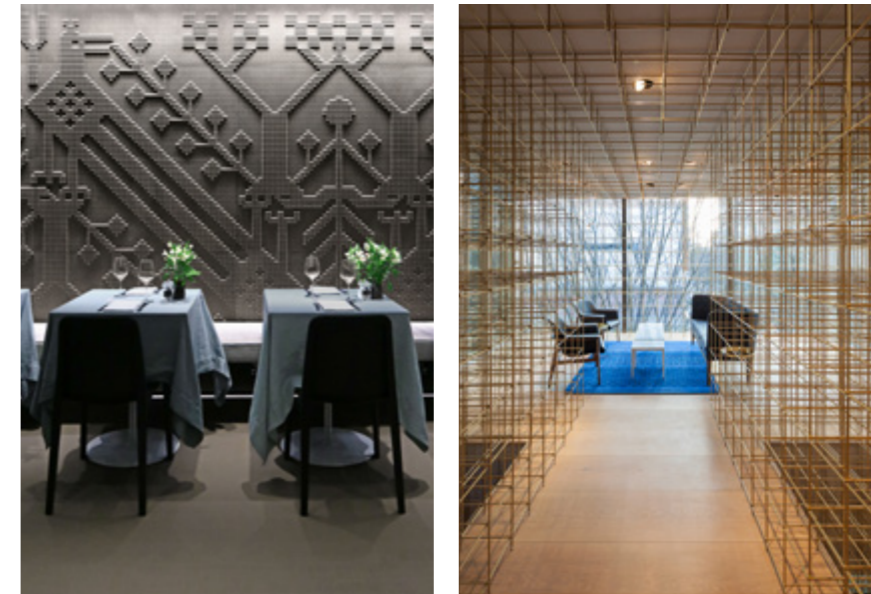
Digitalization opens up an entirely new sphere for designers. With their roots in algorithmic data, innovative skeletal frameworks, geometric 3D forms and a new visual landscape emerge. Central to these digital design directions is an exciting multi-sensory approach that we, as sensory beings, avidly embrace.



Self-expression is key as a previously unseen, decorative and ornamental language evolves, where elegant tactility and 3D frameworks create immersive and engaging spaces. These spaces border on futurism when combined with crystal. Laser-carved elements, openwork, and the play with positive and negative space extend into rooms, lending a new multi-dimensional edge to interiors. Neutral colors allow these engaging surfaces and spaces to take center stage and create a new interior reality. Precious materials such as metal and crystal add luxurious drama to highly tactile interior spaces.

SURFACES & SPACES

Surface manipulations merging crystal with wood, stone, metal, or synthetic materials play with openwork patterning and laser-carved elements. Spaces oscillate between geometric order and calculated asymmetry, while layered elements create additional interest.



LIGHTING

Bold 3D sculptural lighting designs use rods, beams and grids in gold, copper, steel and crystal combinations. Reflection and texture manipulations become important elements in lighting.

REFLECT AND RENEW

REFLECT AND RENEW

P-17-18



THE NEW RESIDENT

INTERIOR INSPIRATIONS 2018

No longer content with society's throwaway lifestyle, we have woken up to the critical importance of sustainability to the way we live. A new paradigm is required – one that evaluates product design in terms of lifespan as well as aesthetics. This is the most influential force shaping 21st-century design.



REFLECT AND RENEW

Prompted to reconsider our needs beyond simple decoration, we seek designs that reflect this new imperative. Form and function combine, relieving the minimalism of our contemporary interiors with organic shapes and elements borrowed from nature, which touch us emotionally. Silky-smooth metals, crystals of exceptional clarity, and spaces softened with diffuse light all answer this demand.

SURFACES & SHAPES

Blurring the stark lines of contemporary rooms with a subtle blend of organics and graphics, the new shapes are lyrical and sculptural, natural and expressive. Surfaces are softly textured, creating gentle spaces that play to a deep-felt desire for tactile reassurance.



LIGHTING

Organic structures in sensuous polished gold and matte silver merge with shimmering crystals to emit a soft, neutral, white light. The mood is exemplified by Tord Boontje's Luminous Reflections chandelier collection. Crafted with surgical precision and ethereal grace, the pieces are designed to create a subtle wash of dappled luminosity reminiscent of the way sunlight dances on water.

TORD BOONTJE

LUMINOUS REFLECTIONS COLLECTION

BY TORD BOONTJE



Tord Boontje's latest collaboration with Swarovski features four lighting designs and three extra-large crystal lighting components. The crystal components were developed specifically for the interior lighting industry and are the first of their kind to be launched by Swarovski. Their highly innovative, fluid and unfaceted surfaces create a rippled effect that gives a soft, organic light that replicates the shimmering reflections of sunlight on water.



Boontje spent many hours in the Swarovski Archive studying the company's heritage and understanding the way light interacts with crystal. The outcome was three extra-large innovative components measuring 8 cm – 12 cm, specially developed for the lighting industry, with fluid, un-faceted surfaces.



Called ARC, SWIRL and CIRCLE, they capture nature's wild beauty together with the refinement of the finest crystal jewelry in the world – a somewhat new direction for a company whose expertise lies in precision cutting.

He started with strong, clear circle and oval shapes, and then he varied the thickness of the material, adding ridges to focus the light and twists to curve the reflections. Next, he worked with Swarovski to develop the prototypes into a range of organic shapes and finishes, using the curved crystals with polished or frosted surfaces and integrated LED technology to produce rippled reflections of soft, glowing light.



Luminous Reflections is the culmination of his efforts, a perfect showcase that demonstrates the play of light on water. And despite the absence of faceted surfaces, Luminous Reflections' crystals shine with astonishing brilliance, thanks to Swarovski's highly complex production techniques.

INNOVATIONS


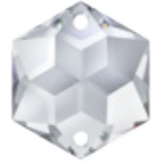

OVERVIEW



- 27 INNOVATIONS OVERVIEW
- 29 DESIGNER EDITION
- 30 Luminous Reflections Designed by Tord Boontje
Fredrikson Stallard
- 31 PRODUCT CATALOG
- 33 Swarovski Strass® Lighting Components
- 34 Luminous Reflections Designed by Tord Boontje
- 35 Glaciarium Designed by Fredrikson Stallard
- 36 Swarovski Forward Integrated Lighting Products
- 37 Knobs And Handles
- 39 Surfaces
- 45 Why Swarovski
- 47 General Warning
- 49 Sales Contacts
- 50 Copyrights
Imprint



INNOVATIONS

NEW SWAROVSKI STRASS® LIGHTING COMPONENTS


Article N°	Item	Size /mm	Color /Effect	
8135	Hexagon Star		Crystal Crystal Blue AB Crystal Golden Shadow Crystal Paradise Shine Medium Sapphire Rosaline Silk	
			14 × 12	
			16 × 14	
			18 × 16	
			20 × 17,5	
			22 × 19	Crystal
			24 × 21	
26 × 22,5				
28 × 24,5				
8136	Hexagon Star 2-hole		Crystal Crystal Blue AB Crystal Golden Shadow Crystal Paradise Shine Medium Sapphire Rosaline Silk	
			14 × 12	
			16 × 14	
			18 × 16	
			20 × 17,5	
			22 × 19	Crystal
			24 × 21	
26 × 22,5				
28 × 24,5				
8137	Hexagon Star 3-hole		16 × 14 Crystal	

INNOVATIONS

NEW SWAROVSKI STRASS® LIGHTING COMPONENTS

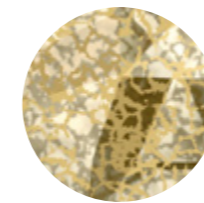
Article N°	Item N°	Item	Size /mm	Color /Effect	
8503		Asymmetric Bead		10	
				14	Crystal
				18	
8981	004140	Butterfly		43 × 51 Crystal Blue AB CAL VZ SI	

SWAROVSKI FORWARD INTEGRATED LIGHTING PRODUCTS

Article N°	Item N°	Item	Size /mm	Color /Effect	Light Color
8982	010108	XL VIBRANT BEAD		Crystal	2700 K
	011108	with LED Solution		Crystal	4000 K

CUSTOMIZATION – NEW EFFECTS

LINE EXTENSIONS



Gold Patina



Rosegold






Arctic White


DESIGNER EDITION

DESIGNER EDITION

LUMINOUS REFLECTIONS DESIGNED by TORD BOONTJE

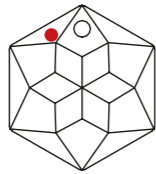
LINE EXTENSION GLACIARIUM DESIGNED by FREDRIKSON STALLARD

Article N°	Item N°	Item	Size /mm	Color /Effect	
	111076		76		
	111100	'CIRCLE'	100		
	111120		120		
	112076		76		
	112100		'CIRCLE' 2-hole	100	
	112120		120		
8951	121076		76 x 34	Crystal	
	121120		120 x 53		
	122076		'SWIRL'		76 x 34
	122120		'SWIRL' 2-hole		120 x 53
	131090		90 x 55		
	131120		'ARC'	120 x 74	

Article N°	Item N°	Item	Size /mm	Color /Effect
	031020	'BEAD'	20	
	040152	'PRISM' no-hole	152 x 90	
	041152	'PRISM'	152 x 22	
	042152	'PRISM' 2-hole		
8951	071040		40 x 26	Crystal
	071050		'CONE STONE'	
	060044	'TRIANGLE'	37 x 42	
	050044	'SQUARE FRAME'	44	
	011160	'SHARD'	160 x 27	

SWAROVSKI STRASS® LIGHTING COMPONENTS

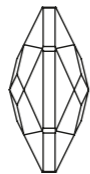
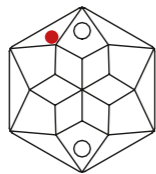
8135 Hexagon Star ^{NEW!}



COLORS		
	Crystal	
	Medium Sapphire	
	Rosaline	
	Silk	
EFFECTS		
	Crystal Blue AB	
	Crystal Golden Shadow	
	Crystal Paradise Shine	

SIZES	
14 × 12 mm	<input type="checkbox"/>
16 × 14 mm	<input type="checkbox"/>
18 × 16 mm	<input type="checkbox"/>
20 × 17,5 mm	<input type="checkbox"/>
22 × 19 mm	<input type="checkbox"/>
24 × 21 mm	<input type="checkbox"/>
26 × 22,5 mm	<input type="checkbox"/>
28 × 24,5 mm	<input type="checkbox"/>

8136 Hexagon Star / 2-hole ^{NEW!}

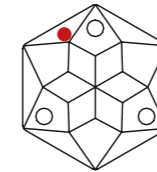


COLORS		
	Crystal	
	Medium Sapphire	
	Rosaline	
	Silk	
EFFECTS		
	Crystal Blue AB	
	Crystal Golden Shadow	
	Crystal Paradise Shine	

SIZES	
14 × 12 mm	<input type="checkbox"/>
16 × 14 mm	<input type="checkbox"/>
18 × 16 mm	<input type="checkbox"/>
20 × 17,5 mm	<input type="checkbox"/>
22 × 19 mm	<input type="checkbox"/>
24 × 21 mm	<input type="checkbox"/>
26 × 22,5 mm	<input type="checkbox"/>
28 × 24,5 mm	<input type="checkbox"/>

SWAROVSKI STRASS® LIGHTING COMPONENTS

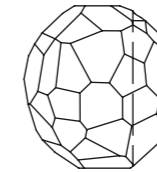
8137 Hexagon Star / 3-hole ^{NEW!}



COLOR	
	Crystal

SIZES
16 × 14 mm

8503 Asymmetric Bead ^{NEW!}



COLOR	
	Crystal

SIZES
10 mm
14 mm
18 mm

8981 Butterfly ^{NEW!}

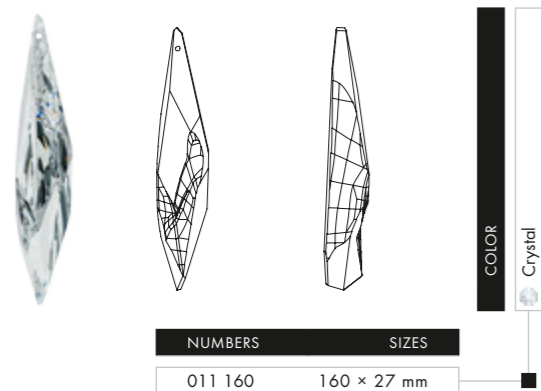


COLOR	
	Crystal Blue AB
	CAL
	VZ
	SI

NUMBERS	SIZES
004140	43 × 51 mm

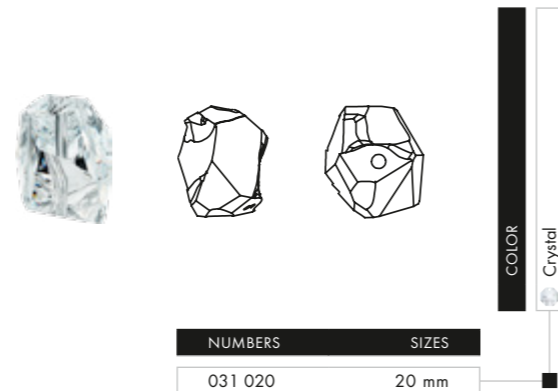
GLACIARIUM DESIGNED by FREDRIKSON STALLARD

8951 Glaciarium 'Shard' 114 mm ^{NEW!}



NUMBERS	SIZES
011 160	160 × 27 mm

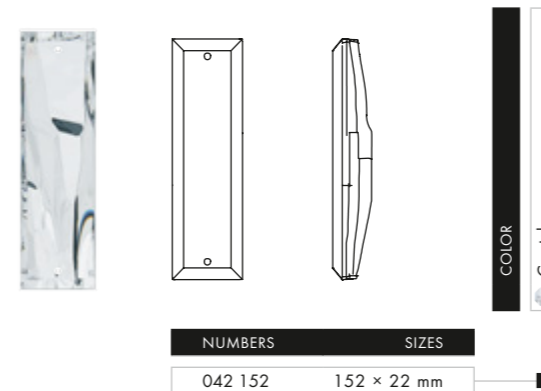
8951 Glaciarium 'Bead' ^{NEW!}



NUMBERS	SIZES
031 020	20 mm

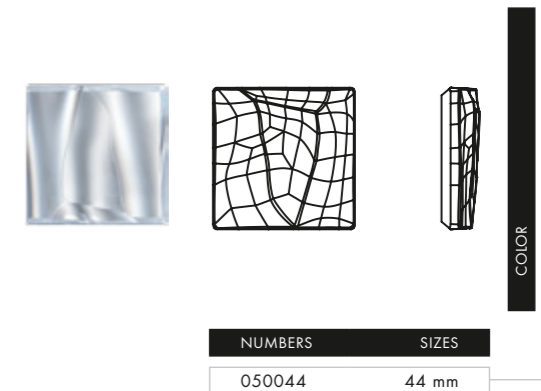
GLACIARIUM DESIGNED by FREDRIKSON STALLARD

8951 Glaciarium 'Prism/2-hole' ^{NEW!}



NUMBERS	SIZES
042 152	152 × 22 mm

8951 Glaciarium 'Square Frame / no-hole' ^{NEW!}



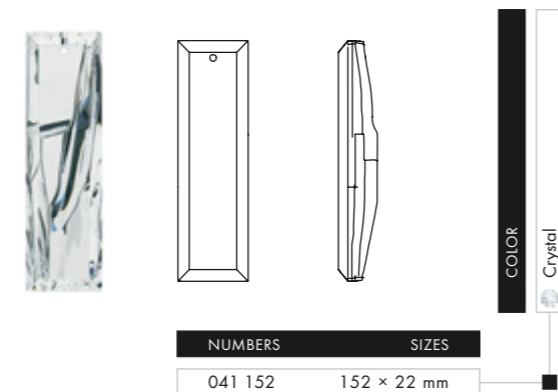
NUMBERS	SIZES
050044	44 mm

8951 Glaciarium 'Prism / no-hole' ^{NEW!}



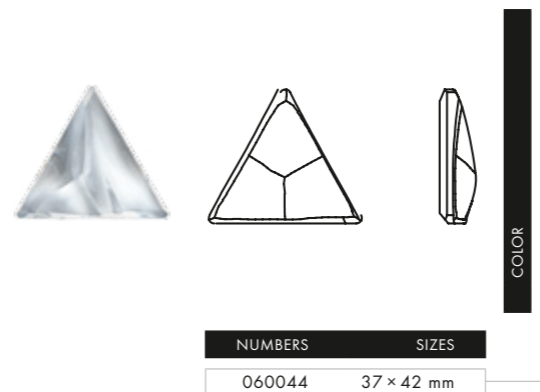
NUMBERS	SIZES
040152	152 × 90 mm

8951 Glaciarium 'Prism' ^{NEW!}



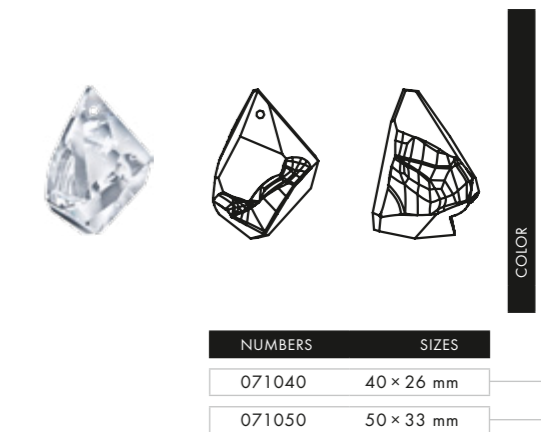
NUMBERS	SIZES
041 152	152 × 22 mm

8951 Glaciarium 'Triangle / no-hole' ^{NEW!}



NUMBERS	SIZES
060044	37 × 42 mm

8951 Glaciarium 'Cone Stone' ^{NEW!}



NUMBERS	SIZES
071040	40 × 26 mm
071050	50 × 33 mm

LUMINOUS REFLECTIONS DESIGNED by TORD BOONTJE

8951 Luminous Reflections 'Circle' ^{NEW!}

NUMBERS	SIZES
111076	76 mm
111100	100 mm
111120	120 mm

8951 Luminous Reflections 'Circle' / 2-hole ^{NEW!}

NUMBERS	SIZES
112076	76
112100	100
112120	120

8951 Luminous Reflections 'Swirl' ^{NEW!}

NUMBERS	SIZES
121076	76 × 34 mm
121120	120 × 53 mm

8951 Luminous Reflections 'Swirl' / 2-hole ^{NEW!}

NUMBERS	SIZES
122076	76 × 34 mm
122120	120 × 53 mm

8951 Luminous Reflections 'Arc' ^{NEW!}

NUMBERS	SIZES
131090	90 × 55 mm
131120	120 × 74 mm

SWAROVSKI FORWARD INTEGRATED LIGHTING PRODUCTS

8982 XL Vibrant Bead with LED solution* ^{NEW!}

NUMBERS	COLOR TEMPERATURE	SIZES
010108	2700 K	108 × 75 mm
011108	4000 K	108 × 75 mm

*Country specific import rules for electronic products may apply

CE Complies with European directives on safety and EMC

UL recognized component mark

KNOBS AND HANDLES

7154 Square Handle** ^{NEW!}

SIZE
40 mm

COLOR OF CASING
081 Gold
082 Silver
088 Stainless Steel

7135 Asymmetrical Ball** ^{NEW!}

SIZES
40 mm
60 mm

* Available in January 2018

** To provide the assurance of original quality, certain Swarovski Knobs and Handles carry the permanent, laser-engraved Quality Signature. Swarovski® and are registered trademarks by Swarovski AG

SURFACES

PRODUCT INFORMATION CRYSTAL ROCKS

A **B** **C** **D** **E**
 7060 02 P22 010/001MLGLD B13

A Article Name	Code	E Back Layer	Code
Surfaces	7060	02= Aluminium 0,7mm	B02
		04=MDF black 6mm	B04
		06=Corian 6mm	B06
B Internal Product Name		08=Float Mirror 6mm	B08
Crystal Rock	02	11= Optiwhite ESG 4mm	B11
Soft Surfaces	12	12=Optiwhite ESG 5mm	B12
		13=Optiwhite ESG 6mm	B13
C Stone Size		14=Optiwhite ESG 8mm	B14
PP22	PP22	21= Float 4mm	B21
PP14	PP14	22= Float 5mm	B22
		23= Float 6mm	B23
D Stone/Film Combination		24= Float 8mm	B24
Black Crystal AB	012/001AB	31=Alcantara Graubeige 2122 (Soft Srfs only)	B31
Black Crystal BermBlue&CryCometArgentLight	012/M102	32=Alcantara Weiss 1105 (Soft Srfs only)	B32
Black Crystal BermBlue&Metallic Lt.Gold	012/M101	33=Alcantara Beige 1110 (Soft Srfs only)	B33
Black Crystal BermBlue	012/001BBL	33=Alcantara Purple 6601 (Soft Srfs only)	B34
Black Crystal Chrom	012/001CHRM	41=Acrylglas weiß 6mm	B41
Black Crystal Heliotrope	012/001HELI	42=Acrylglas schwarz 6mm	B42
Black Crystal Metallic Lt.Gold&Golden Shadow	012/M103		
Black Crystal Metallic Lt.Gold&Red Magma	012/M104		
Black Crystal Metallic Silver	012/001METSI		
Black Crystal Moonlight	012/001MOL		
Black Crystal Red Magma	012/001REDM		
Black Crystal Silver Shade	012/001SSHA		
Black Jet	012/280		
Black Jet Nut	012/280NUT		
Black Crystal&Crystal Matt Finish	012/M112		
Transparent Crystal AB	010/001AB		
Transparent Crystal Argent Light	010/001CAL		
Transparent Crystal Chrom	010/001CHRM		
Transparent Crystal Golden Shadow	010/001GSHA		
Transparent Crystal Metallic LtGold	010/001MLGLD		
Transparent Crystal Metallic LtGold&Golden Shadow	010/M103		
Transparent Crystal metallic LtGold&Red Magma	010/M104		
Transparent Crystal metallic Silver	010/001METSI		
Transparent Crystal Moonlight	010/001MOL		
Transparent Crystal metallic Silver	010/001METSI		
Transparent Crystal Moonlight	010/001MOL		
Transparent Crystal Red Magma	010/001REDM		
Transparent Crystal Silver Shade	010/001SSHA		
Transparent Crystal Bermunda Blue	010/001BBL		

SURFACES

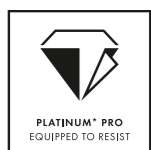
PRODUCT INFORMATION CLASSIC PANEL

A **B** **C** **D** **E** **F** **G**
 7060 16 001/Ground B08 F03 L03 CL03

A Article Name	Code	E Front Layer	Code
Surfaces	7060	01= Optiwhite ESG 4mm	F01
		02=Optiwhite ESG 5mm	F02
		03=Optiwhite ESG 6mm	F03
B Internal Product Name		04=Optiwhite ESG 8mm	F04
Classic Panel Surfaces	16	05=Optiwhite ESG 10mm	F05
Classic Panel Stairs	18	11= Float 4mm	F11
Crystal Signs	20	12= Float 5mm	F12
		13= Float 6mm	F13
C Stone Combination		14= Float 8mm	F14
001 Mix für Classic Crystal Ground	001/Ground	16= satined glass 6mm	F16
001 Mix für Classic Progressive	001/Progressive	18= VSG glass (walkable) 10mm	F18
001 Mix für Classic Sequence	001/Sequence	20= Stopsol glass 6mm	F20
001 Mix für Classic Designer Edition 1	001/FS Triangles	22= partial frosted glass 6mm	F22
001 Mix für Classic Designer Edition 2	001/FS Squares		
001 Mix für Classic Andromeda	001/Andromeda		
001 Mix für Classic Implosion	001/Implosion		
001 Mix für Sign no smoking	001/NoSmoke		
D Back Layer		F LED	
08=Float Mirror 6mm	B08	lateral Light	L03
11= Optiwhite ESG 4mm	B11	Lightpoints	L04
12=Optiwhite ESG 5mm	B12		
13=Optiwhite ESG 6mm	B13	G Colour of lacquering (lacquered border circumferential)	
14=Optiwhite ESG 8mm	B14	9003 Signal white	CL01
21= Float 4mm	B21	9005 Jet black	CL02
22= Float 5mm	B22	9006 White aluminium	CL03
23= Float 6mm	B23		
24= Float 8mm	B24		

WHY SWAROVSKI

EXCELLENCE, THROUGH INNOVATION AND ORIGIN



PLATINUM* PRO

Using its vast research and technological capability, Swarovski has set a new standard in the lifespan of crystals with its new advanced Platinum Pro foiling technique.

Platinum Pro is not only resistant to environmental damage from chlorine, salt water, and perfume—it can also withstand processes such as soldering and electroplating, giving it unprecedented durability.

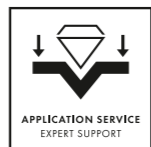
PREMIUM, BY SERVICE AND DESIGN



DESIGN SERVICE

With its international reputation for creative excellence, Swarovski is at the forefront of design innovation across the world, offering exceptional service provided by the

industry's best creative talent. Throughout a global network of Design Centers, highly experienced teams provide first-class creative direction encompassing trend research, design, technical design, and consulting. It is Swarovski's thoroughness, together with its passion for design, which makes it successful in translating customer requirements into creative commercial proposals.



APPLICATION SERVICE

Swarovski's comprehensive range of Technical Services delivers customized technical crystal application support, aiming for finding a realizable and suitable

solution for our customers. The service is built up on our comprehensive crystal application expertise of all relevant application techniques, our technical Swarovski product knowledge, our process engineering competences and crystal application equipment experiences linked with product manufacturing knowledge of various industries.



GLOBAL SERVICE

Swarovski sells its products in over one hundred countries. Committed to providing dedicated personal assistance, Swarovski structures its operations around a global

sales force supported by Customer Care Centers with a deep understanding of local markets. Through its collaborations with certified Application Partners, Swarovski provides a worldwide Production/Application Network to its customers. Likewise, Swarovski's customers profit from its creative direction, from very specific modular aspects to fully comprehensive solutions.



DESIGNER EDITIONS

Beginning with Christian Dior in the 1950s, and continuing with today's top designers and brightest rising stars, Swarovski is proud of its long history of creative

collaboration with artists, artisans, and designers from all areas of jewelry and fashion. Crystal has long been a dynamic source of inspiration for creative minds—enchanted by its myriad design possibilities, their visionary ideas are transformed into exclusive cuts and unique designs for Swarovski crystal.

COMPLIANCE, WITH INTEGRITY



ADVANCED CRYSTAL

Swarovski's patented lead-free** formula has changed the DNA of crystal while still offering the same sparkle, dependability, and variety for which Swarovski is famous.

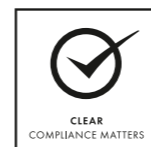
If you haven't noticed a difference, that's probably because when it comes to the Advanced Crystal standard it's what you don't see that matters. Carefully selected raw materials are made into products compliant with crucial current laws and regulations governing the use of certain substances in finished products in the most relevant segments of Swarovski's customers' businesses. Swarovski's new and innovative formula offers peace of mind for business partners in the ever-stricter international regulatory environment.



COMPLIANCE SERVICE

Through worldwide legal monitoring and customer requirements, it is noticed that the amount of laws and regulations is getting more and more complex. To help the

customer to keep an overview and to receive compliant and safe products, Swarovski is offering the unique Compliance Service. The service includes assessments and evaluations regarding substance limitations (Restricted Substance Lists) as well as conformations and certificates of compliance of Swarovski products to our customers' requirements.



CLEAR

Swarovski's internal compliance program, called CLEAR, summarizes the chemical requirements of the most critical laws and regulations regarding the restriction and

prohibition of substances in its customers' most relevant product segments. These particularly include jewelry and accessories, textiles, interiors, packaging, electronics, and children's products. The program and its guidelines are subject to regular legal monitoring. Likewise, Swarovski requires all suppliers to fully declare their raw materials and to take part in the CLEAR program. CLEAR provides customers with the comfort of trust that all products have undergone a reasonable testing program and are found to comply with their requirements.

* Silver mirror coated with a platinum colored protective layer

** Crystal glass and all other materials containing 0.009 % lead or less.



CERTIFICATE OF AUTHENTICITY

The seal 'crystals from Swarovski' serves as a certificate of authenticity for products with genuine Swarovski crystals.



QUALITY SIGNATURE

To provide the assurance of original quality, Swarovski Lighting components* carry the permanent, laser-engraved Quality Signature. Please note that for design reasons or technical limitations the Quality Signature is not included on certain components.

* Clear crystal 12 mm and above, colored crystal 18 mm and above. No signature with the colors Arctic White, Bordeaux, Jet and Emerald. You will find the location of the Quality Signature marked by a red dot on component line drawings. and Swarovski® are registered trademarks by Swarovski AG.



ADVANCED CRYSTAL THE NEW DNA OF CRYSTAL

The advantage to being first is that you get to set the agenda. Throughout its long history, Swarovski has pioneered technologies and accomplished visions that have made waves far beyond the bounds of its own industry. Now Swarovski is stepping forward to announce a dramatic change in the DNA of its crystal: the Advanced Crystal standard.

Advanced Crystal standard – a new, innovative lead-free* crystal composition, complying with current laws and regulations governing the use of certain substances in finished products in the most relevant segments of our customer's business, and which is patented by Swarovski in the US, Japan and 16 European countries.

* Crystal glass and all other materials containing 0.009% lead or less.

MAKING BEAUTY MEASURABLE: 5 CS FOR QUALITY

Beauty, as the saying goes, is in the eye of the beholder. The incomparable precision-cut crystals from Swarovski conveys beauty in all its diverse forms. Above and beyond subjective perception, the quality and value of crystal can be determined by objective criteria regardless of the material of which it is composed. Just as the value of a diamond is graded on the basis of the ,4 Cs', the value of a crystal is determined by the ,5 Cs'.

Swarovski is continually streamlining and developing each one of these five quality criteria and thus meets the highest standards with utmost precision, resulting in unrivalled brilliance.



Cut. Only cutting of the greatest precision is capable of lending crystal exceptional brilliance. Exact faceting is required to wholly achieve the prismatic effect of the crystal and bring out its full beauty. The more precisely the crystal is cut, the greater its brilliance.



Clarity. Crystal only has purity and clarity to the extent that it is free of inclusions such as cloudy spots, streaks, and bubbles. This requires the purest raw material and processing techniques that are carried out flawlessly.



Color. Perfect crystal is also characterized by color intensity and fidelity, independent of size and cut. If a crystal reflects light particularly well and disperses all its spectral colors, it will give rise to a fiery play of color in both the crystal and the immediate environment.



Contour. Meticulous quality control in Swarovski's manufacturing process ensures perfectly shaped, flawlessly faceted crystals.



Care. Sustainability concerning the selection and composition of ingredients, responsible production, and conscientious handling of legislation, customers, and the environment are essential values in modern crystal production.

COLLECTIONS

Swarovski is the leading manufacturer of precision-cut crystals that are used in the fashion and jewelry industries as well as in the world of lighting design, architecture, and interiors. Crystals from Swarovski have become an indispensable material for the creations of international designers. Swarovski sells its loose and forward-integrated crystals to the worlds of fashion and design under the product brand Swarovski.

This collection provides a complete overview of the whole Architecture and Lighting product range. All product information is also available online, on our business website SWAROVSKI-PROFESSIONAL.COM.

A dedication to perfection and innovation has been a cornerstone policy of the company since its foundation in 1895. This pursuit of excellence includes Swarovski's commitment to trend research, which results in the creation of trend-relevant crystal cuts as well as new colors and effects that are added to the assortment every season. These innovations and seasonal line extensions are featured in comprehensive launch communication packages. Dedicated to remaining the world leader in precision-cut crystal, Swarovski also offers its customers segment-specific collections and customized product solutions as well as trend support and application services. For more information concerning Swarovski products, services, and sales materials, please contact your local Swarovski sales office.

ORDERING

Please contact your nearest Swarovski sales office to order products. Registered customers also have the convenient option to order online via the e-commerce service of b2b.ecommerce.swarovski.com. In addition to providing an online ordering facility, the website also includes valuable product information, availability, delivery details etc. Contact your Swarovski sales office to register for this service.

APPLICATION INFORMATION

Thanks to their outstanding quality and with the help of specially developed application techniques, Swarovski products can be processed easily and quickly to produce high quality results.

The Application Manual provides in-depth information regarding all current application techniques and the technical services provided by Swarovski. It contains detailed illustrations and instructions for correct soldering, plating, gluing, Ceralun™, sewing, embroidery, Hottfix, and mechanical application as well as useful care instructions and information about the required machines, tools, and aids and their suppliers. The manual is available in various international languages.

All detailed and up-to-date information regarding the Application Manual is also available as a free download on our business website SWAROVSKI-PROFESSIONAL.COM. The application techniques are demonstrated in animations and videos.

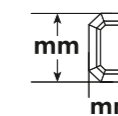
For specific questions regarding the application techniques, please contact your local Swarovski sales office.

SIZES

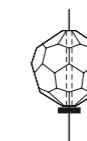
Various measurement abbreviations are used to classify the components.



PP, SS Pearl Plate (PP), Sieve Size or Stone Size (SS) for round crystals. Please also refer to the conversion table located at the back of the collection ("Open to See Sizes").



mm Metric measurement in millimeters.



m Length of Strands is measured in meters.

COLORS & EFFECTS

Colors and effects can appear different when illuminated with different light sources. Swarovski uses standard light source D50 for color decision and comparison.

Special color cards for several product groups are located at the beginning of the chapters.

EFFECTS

Vacuum Coating Effects

Vacuum coating processes on the surface of the crystal produce either a special surface or a translucent effect, according to the application methods used.

Please find below a list of all Swarovski effects followed by an explanation of the special vacuum coating processes.


Surface Effects

(Vacuum coating on the surface of the crystal)

	<i>Effect Code</i>	<i>Name</i>
	ANTP	Antique Pink
	API	Astral Pink
	BLAB	Blue Aurore Boreale
	BLSH	Blue Shade
	BRSH	Bronze Shade
	CAL	Comet Argent Light
	COP	Copper
	DOR	Dorado
	GSHA	Golden Shadow
	HEM	Hematite (only on Jet)
	IRIG	Iridescent Green
	LTCH	Light Chrome
	LUMG	Luminous Green
	METSH	Metallic Sunshine
	MOL	Moonlight
	NUT	Nut (only on Jet)
	PARSH	Paradise Shine
	ROGL	Rose Gold
	SAT	Satin
	SSHA	Silver Shade

Translucent Effects

(Vacuum coating on the reverse side of the crystal, effect shines through the transparent crystal)

	<i>Effect Code</i>	<i>Name</i>
	BBL	Bermuda Blue
	HEL	Heliotrope
	SINI	Silver Night
	VL	Vitrail Light
	VM	Vitrail Medium

Patina Effects


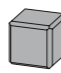


(Partial coating of the correspondingly modified effects)

<i>Effect Code</i>	<i>Name</i>
BLAPA	Black Patina
GOLPA	Gold Patina
ROSPA	Rose Patina
SILPA	Silver Patina
WHIPA	White Patina

PA (Patina)


Innovative technology allows for the partly coated application of adapted effects. Its historical edge and "used" look give it a certain timelessness, without losing its crystalline appearance.

Variations on Surface Effects

-  **2x**
Both sides of the stone are treated with an effect.
-  **B**
Effects on three sides of a cube shape.
-  **V**
The effect is used in reverse. A surface effect is used like a translucent effect.
-  **Z**
Only a part of the stone is treated with an effect.
- CAL 'V 'SI & CAL 'VZ 'SI**
The effect CAL (Comet Argent Light) is also used as a mirror coating on the reverse side of the crystal in special cases.
- /G**
Article with partly (PF) or fully frosted (FF) surface.

Special Surface Effects

Swarovski has been able to achieve various special surface effects by using special chemical and mechanical processes on the surface of the crystals.

	<i>Effect Code</i>	<i>Name</i>
	MAT	Matt Finish

The Matt Finish effect is achieved by performing a chemical matting process on the entire surface of the crystal. Small variations in the size of the articles may occur as a result of this chemical process.

FOILING

Foiling is the process of mirror coating the reverse side of the crystals.



Platinum* Pro Foiling (F)

A silver mirror finish that is coated with a platinum colored protective layer of highest quality. The Platinum Pro Foiling is not only resistant to environmental damage from chlorine, salt water, and perfume – it can also withstand processes such as soldering and electroplating, giving it unprecedented durability. Available on request.

KNOBS AND HANDLES

Special protective layer (Prolay)

The protective layer is a lacquer system, which is applied over the reflective layer of the crystal and completely envelops the reflective surface. On one hand the protective layer increases the reflective coating's resistance to wear and tear against scratches and damages and on the other hand it prevents moisture, cleaning agents etc. from coming into contact with the reflective coating, which could corrode and damage the reflective coating.

Application of the crystal components

Due to the metallic composition of the coating, please ensure that the coating is fully covered with the glue when applying the crystal components. Otherwise the vacuum coating could corrode as a result of various liquids or cleaning agents.

CUSTOMIZED SOLUTIONS

Swarovski offers customized solutions in addition to the standard collection**.

The following customized solutions are available:

- Standard articles in non-standard colors and effects
- Standard articles with motifs/prints
- Customized product development for CE and FIE (with regard to cut/sizes)
- Customer-specific modifications of catalog articles with regard to color/effect/print

For technical reasons, special productions may be subject to a minimum order quantity, while standard articles are available as individual packs. Please note that special productions may be subject to individual delivery times.

For more information and consultancy regarding special productions, please contact your local Swarovski sales office.

CLEANING RECOMMENDATION

Crystal

No special care is required for cleaning Swarovski crystals. If your crystals are covered by a thin layer of dust, you can reach perfect results by simply dusting them off with a dry, antistatic cloth. We recommend wearing white cotton gloves when handling crystals, to avoid leaving fingerprints on the surface.

Use a microfiber cloth or a soft, lint free, absorbent cotton cloth. Dampen the cloth in the prepared lukewarm water and wring it out thoroughly. Then, gently clean each Swarovski crystal wiping from top to bottom and dry it with a clean cloth to achieve perfect brilliance.

Metal components chrome, gold-plated

Always use soft, lightly dampened cloths or leather rags to clean metal components. Make sure to thoroughly dry all parts after use or cleaning. For more difficult stains we recommend adding a few drops of white spirit or a skin-friendly cleaning agent to lukewarm water and patting the spot dry with a soft, lint free cloth after cleaning.

* Silver mirror coated with a platinum colored protective layer.
** Available to all our customers. Availability of special productions may be limited by technical feasibility and if our Terms and Conditions are applied.

LAWS, REGULATIONS, NORMS & STANDARDS

The composition of loose and forward-integrated crystals in the Advanced Crystal standard is compliant with regulatory industry norms and laws regarding the restriction or prohibition of certain substances for finished products in the most relevant segments of our customers' business.

WARNING NOTICES

General Warning

Loose crystals may present a small parts hazard to young children, particularly children under three years old. Depending on the size of the crystal and any attached material (such as glue, fabric, etc.), children may choke on, inhale, swallow, or insert the crystal into their noses. Magnetic products with crystal applications pose a particular risk of serious intestinal injury if ingested. The application techniques as stated in the Application Manual do not guarantee that crystals will not come loose. For each application, the manufacturer must determine whether the product meets the relevant requirements related to small parts hazards and assess any risk it may pose to small children. Failure to follow Swarovski's care instructions may result in damage to the crystal, which could pose a risk of laceration or other harm.

Warning for Crystal Strands

Crystal Strands are intended for DECORATIVE USE ONLY. Because of their unique physical properties, Swarovski crystals are not suitable for use in applications that consist of free-flowing strands and bring the crystals into contact with one another, which could damage them (such as functional curtains, partitions, stage decorations, etc.). It is up to the client to assess whether the strands are suitable for use in the intended application. Due to technical reasons the effective length can vary from strand to strand. Any extension, enlargement, adaptation or other change of strands (in whatever form) is not permitted. The application, use and processing of these products are solely the responsibility of the client, who agrees to defend and indemnify Swarovski, as well as hold Swarovski harmless from any and all claims by third parties based on product liability or otherwise relating to uses of Swarovski products the client has purchased, and waives all claims of its own. Please read instructions and warning notices in the application manual.

Warning for Magnetic Products

Loose crystals may present a small parts hazard to young children, particularly children under three years old. Magnetic products with crystal applications pose a particular risk of serious intestinal injuries if ingested. For each application of magnetic crystal products, the manufacturer must determine whether the product meets relevant requirements related to small parts hazards and assess any risk it may pose to small children.

Further information is available on the internet at SWAROVSKI-PROFESSIONAL.COM

Warning for Tableware

The application of loose crystals to tableware presents a potential risk of aspiration, choking, swallowing, or tooth damage should crystals become loose. To reduce this risk, crystals should never be applied to any surface of tableware likely to come in contact with food or the mouth, and crystals should never be placed on any tableware intended for use by children. Tableware with crystals intended for decorative use only should be marked as such. To avoid dishwasher damage, tableware decorated with crystals should be washed by hand. The application techniques or suggestions in this manual do not guarantee that crystals will not come loose. For each application, the manufacturer must determine whether the product meets relevant requirements related to small parts hazards or use in food contact items and assess any risk it may pose to users.

The use of crystals (which may contain restricted substances deemed hazardous under local laws) and adhesives on tableware is subject to legal restrictions in specific countries. The customer is fully responsible for complying with these country-specific provisions and shall defend, indemnify, and hold Swarovski harmless from any and all third-party claims based on product liability or otherwise relating to uses of Swarovski products, and waives all its own claims against Swarovski.

Unsuitable Applications

Crystals from Swarovski are intended for use in the fields of fashion, jewelry, accessories, textile products, and for interior décor. Due to their physical properties, crystals from Swarovski are unsuitable for other uses (e.g. gluing onto teeth, using on or near mucous membranes, and other unsafe uses). The customer shall defend, indemnify, and hold Swarovski harmless from any and all third-party claims based on product liability or otherwise relating to uses of Swarovski products purchased by the customer, and waives all its own claims.

Responsibility of User

Any oral, written, or test-based advice that Swarovski provides regarding techniques for the application of its products are recommendations based on Swarovski's current knowledge and the information provided by its suppliers. Such advice does not discharge the customer from carrying out its own tests of techniques it proposes to use and their suitability for the intended application. The application, use, and processing of these techniques and products are solely the user's responsibility.

SWAROVSKI OFFICES & PARTNERS

EUROPE

For Austria, Germany, Switzerland, Benelux, Scandinavia, UK, Ireland, France, Spain, Portugal, Greece, Africa and Eastern Europe, please contact SWAROVSKI INTERNATIONAL DISTRIBUTION AG Triesen:

SWAROVSKI INTERNATIONAL DISTRIBUTION AG

Dröschstrasse 15, Postfach 567
9495 Triesen
Liechtenstein
Phone: +423 399 5757
Fax: +423 399 5750
sp.info@swarovski.com

SWAROVSKI INTERNAZIONALE D'ITALIA S.P.A. SOCIETA' A SOCIO UNICO

Via Giorgio Giulini n.3
20123 Milano
Italy
Phone: +39 02 722601
sp.it@swarovski.com

SWAROVSKI OOO

BC "Sadovaya Plaza"
Dolgopruckovskaya str., h.7, floor 12
127006 Moscow
Russia
Phone: +7 495 258 83 03
sp.info@swarovski.com

SWAROVSKI KRISTAL TIC.LTD.STI.

Abdi İpekçi Cad. Reasürans Han E Blok,
No:57 Kat:5
34367 Nişantaşı Şişli, Istanbul
Turkey
Phone: +90 (0) 212 225 44 29
Fax: +90 (0) 212 225 27 99
sp.info@swarovski.com

MIDDLE EAST

SWAROVSKI MIDDLE EAST FZE

P.O. Box 17128, Jebel Ali Free Zone
Dubai
United Arab Emirates
Phone: +971 4 803 2047
Fax: +971 4 881 5623
farah.zaroug@swarovski.com
palak.bhati@swarovski.com

SWAROVSKI INDIA PVT. LTD.

1st Floor, Building 10C
DLF Cyber City
DLF Phase 2
Gurgaon - 122002
India
Phone: +91 (124) 469 8200
Fax: +91 (124) 469 8277
customer_service.in@swarovski.com

NORTH & SOUTH AMERICA

SWAROVSKI CRYSTAL COMPONENTS LTDA.

Alameda Itu, 852 - 13º Andar
01421-001 São Paulo - SP
Brazil
Phone: +55 11 3088 8821 (ext. 121)
Fax: +55 11 3088 5976
comercial.br@swarovski.com

SWAROVSKI NORTH AMERICA LTD.

1 Kenney Drive, Cranston
Rhode Island 02920-4400
USA
Phone: +1 401 463 5132
Fax: +1 401 463 4707
Toll free: 1 800 463 0849
sp.sna@swarovski.com

SWAROVSKI NORTH AMERICA LTD.

Los Angeles Showroom
California Mart
110 East 9th Street
Suite B771
Los Angeles, CA 90079-2827
USA
Phone: +1 213 489 2393
Fax: +1 213 489 1961

SWAROVSKI CRYSTAL S.A. DE C.V., MEXICO

Av. Ejército Nacional No. 579
Piso 11, Local A, Col. Granada
Del. Miguel Hidalgo
C.P. 11520
México D.F.
Phone: +5255 5545 4509

ASIA

SWAROVSKI HONG KONG LTD.

9th Floor, Fortis Centre,
1063 King's Road, Quarry Bay
Hong Kong
Phone: +852 2566 6301
Fax: +852 2807 1902
sp.infohk@swarovski.com

SWAROVSKI (GUANGZHOU) TRADING COMPANY LTD.

Room 02-07, 17F, Central Tower
No. 5, Xiancun Road
Zhujiang New Town,
Tianhe District, Guangzhou 510623
China
Phone: +86 20 3813 2188
Fax: +86 20 3810 2278
Toll Free: +86 400 880 1744
sp.info@swarovski.com

SWAROVSKI (GUANGZHOU) TRADING COMPANY LTD.

Beijing Liaison Office
Room 2001-2002,
20/F, Tower B, Gemdale Plaza,
No. 91, Jianguo Road, Chaoyang District,
Beijing 100020
China
Phone: 010-65829773

SWAROVSKI (GUANGZHOU) TRADING COMPANY LTD.

Shanghai Liaison Office
Room 1602,
The Headquarters Building
No. 168, Xi Zang Road (M)
Shanghai 200001
China
Phone: +86 21 2306 9945
Fax: +86 21 6372 9180

SWAROVSKI (GUANGZHOU) TRADING COMPANY LTD.

Qingdao Liaison Office
Art & Technology Space,
Room No 1-506
No. 63, Haier Road, Qingdao 266061
China
Phone: +86 532 8099 9595
Fax: +86 532 8099 9596

SWAROVSKI (GUANGZHOU) TRADING COMPANY LTD.

Yiwu Liaison Office
Room 8911, Xinguang International
Business Building
No. 1399, Chouzhou Road(North), Yiwu
City, 322000
Zhejiang Province
China
Phone: +86 579 8559 0903
Fax: +86 579 8559 0707

SWAROVSKI (GUANGZHOU) TRADING COMPANY LTD.

Shenzhen Liaison Office
Room 13G, Tower C, Neo Building
6009 Shennan Avenue, Futian District
ShenZhen 518048
China
Phone: +86 755 23605750
Fax: +86 755 23605735

SWAROVSKI TAIWAN LIMITED TAIWAN BRANCH

3/F, No. 27, Chung-Shan North Road
Section 1, Taipei 104
Taiwan, R.O.C.
Phone: +886 2 2100 2611
Fax: +886 2 2100 2622
sp.infotw@swarovski.com

SWAROVSKI SINGAPORE TRADING PTE. LTD.

2, Alexandra Road
#03-01 Delta House
Singapore 159919
Singapore
Phone: +65 6661 6333
Fax: +65 6274 8177
sp.infosg@swarovski.com

PT CRYSTALLIZED ELEMENTS

Cyber 2 Tower, 31st Floor Unit B
Jl. HR. Rasuna Said, Blok X5 No. 13
Jakarta 12950
Indonesia
Phone: +62 21 2902 1451 / 52 / 53
Fax: +62 21 2902 1454
ptcrystallized.id@swarovski.com

SWAROVSKI SINGAPORE PTE. LTD.

(Vietnam Representative Office)
Level 16 & 17, CJ Tower,
6, Le Thanh Ton Street,
Ward Ben Nghe, District 1,
Ho Chi Minh City
Vietnam
Phone: +84 8 62556768
Fax: +84 8 62556801
jessica.ha@swarovski.com

SWAROVSKI (THAILAND) LTD.

849 Vorawat Building, 16th Floor,
Room 1601 - 1602,
Silom Road, Silom, Bangrak,
Bangkok 10500
Thailand
Phone: +662 635 1990
Fax: +662 635 1585
sthsmarketing@swarovski.com

SWAROVSKI KOREA LTD.

BaekYoung Building 13F(SP)
(6 Cheongdam-dong) 456 Dosan-daero,
Gangnam-gu,
Seoul
Korea 06062
Phone: +82 2 6930 9974
Fax: +82 2 3416 0336
jaylin.choi@swarovski.com

SWAROVSKI JAPAN LTD.

Ichibancho Tokyu Building 12F,
21 Ichiban-cho, Chiyoda-ku,
Tokyo, 102-0082
Japan
Phone: +81 3 3262 3012
Fax: +81 3 3262 3723
sp.infoJP@swarovski.com

NEW ZEALAND

SWAROVSKI INTERNATIONAL (NZ) LTD.

Shop 3, 45 Queen St, Auckland 1010
New Zealand
Phone: +61 2 8345 7200
Fax: +61 2 9313 6506
elementsenquiries.sau@swarovski.com

AUSTRALIA

SWAROVSKI INTERNATIONAL (AUSTRALIA) PTY. LTD.

1/4D Huntley St
Alexandria NSW 2015
Australia
Phone: +61 2 8345 7200
Fax: +61 2 9313 6506
elementsenquiries.sau@swarovski.com

SWAROVSKI OFFICES & PARTNERS

SWAROVSKI COMMUNICATION & CREATIVE SERVICE CENTERS WORLDWIDE

LONDON

CORPORATE BRANDING & COMMUNICATION SWAROVSKI CRYSTAL BUSINESS

2nd Floor, 21 Sackville Street
London, W1S 3DN
United Kingdom
Phone: +44 (0) 20 7255 8400
Fax: +44 (0) 20 7255 8473
www.swarovski.tv
www.swarovskigroup.com
www.atelierswarovski.com
www.swarovskicrystalpalace.com

LOS ANGELES

SWAROVSKI NORTH AMERICA LTD.

Los Angeles Showroom,
California Mart
110 E. 9th Street, Suite B771
Los Angeles, CA 90079-2827
USA
Phone: +1 213 489 2393
Fax: +1 213 489 1961

SWAROVSKI CORPORATE COMMUNICATIONS UNIT & CREATIVE SERVICES CENTER

8560 W. Sunset Blvd., Suite 200
West Hollywood, CA 90069
Los Angeles
USA
Phone: +1 310 652 0089 x3813
Fax: +1 310 652 0951

DUBAI

SWAROVSKI MIDDLE EAST FZE

P. O. Box 17128, Jebel Ali Free Zone
Dubai
United Arab Emirates
Phone: +971 4 881 6562
Fax: +971 4 881 5623
farah.zaroug@swarovski.com
palak.bhati@swarovski.com

SINGAPORE

CORPORATE BRANDING & COMMUNICATION & ATELIER SWAROVSKI ASIA PACIFIC

SWAROVSKI MANAGEMENT PTE LTD

2 Alexandra Road
#03-02 Delta House
Singapore 159919
Phone: +65 6661 6333
atelierapac@swarovski.com

MILAN

SWAROVSKI INT.LE D'ITALIA S.P.A.

SOCIETA' A SOCIO UNICO
Via Giorgio Giulini n.3,
20123 Milano
Italy
Phone: +39 02 722601
stefania.fedeli@swarovski.com

NEW YORK

SWAROVSKI CREATIVE SERVICE CENTER

10 E 53rd Street, 26th Floor
New York, NY 10022
USA
Phone: +1 212 935 4200
Fax: +1 212 935 8800
Toll free: 1 877 888 7980

PARIS

SWAROVSKI FRANCE S.A.S.

15, Boulevard Poissonnière,
75001 Paris
France
Phone: +33 1 4476 1515
sp.france@swarovski.com

CORPORATE BRANDING & COMMUNICATIONS PARIS

374 rue saint Honoré,
75001 Paris
France
Phone: +33 (0) 1 42 56 29 84
Fax: +33 (0) 1 45 61 17 67
Nadine.mao@swarovski.com

SÃO PAULO

SWAROVSKI CRYSTAL COMPONENTS LTDA.

Alameda Itu, 852-13º Andar
01421-001 São Paulo - SP
Brazil
Phone: +55 11 3088 8821
Fax: +55 11 3088 5976
comercial.br@swarovski.com

WATTENS

D. SWAROVSKI KG

6112 Wattens
Austria
Phone: +43 5224 500 3307
Fax: +43 5224 501 3307
sandra.oconnor@swarovski.com

SWAROVSKI TREND & APPLICATION CENTERS WORLDWIDE

HONG KONG

9th Floor, Fortis Centre,
1063 King's Road
Quarry Bay
Hong Kong
Phone: +852 2566 6301
Fax: +852 2807 1902

BEIJING

Room 2001-2002, 20 F, Tower B,
Gemdale Plaza, No. 91,
Jianguo Road, Chaoyang District
Beijing 100020
China
Phone: 010-65829773

SHANGHAI

Room 1602
The Headquarters Building
No. 168, Xi Zang Road (M)
Shanghai 200001
China
Phone: +86 21 2306 9945
Fax: +86 21 6372 9180

GUANGZHOU

Room 02-07, 17F, Central Tower
No. 5, Xiancun Road,
Zhujiang New Town,
Tianhe District, Guangzhou
510623
China
Phone: +86 20 3813 2188
Fax: +86 20 3810 2278
Toll Free: +86 400 880 1744

BANGKOK

SWAROVSKI (THAILAND) LTD.

849 Vorawat Building, 16th Floor,
Room 1601 - 1602,
Silom Road, Silom, Bangrak
Bangkok 10500
Thailand
Phone: +662 635 1990
Fax: +662 635 1585
sirikarn.ngamboonsin@swarovski.com

TOKYO JAPAN TAC

SWAROVSKI JAPAN LTD.

Ichibancho Tokyu Building 12F,
21 Ichiban-cho, Chiyoda-ku,
Tokyo, 102-0082
Japan
Phone: +81 3 3262 3012
Fax: +81 3 3262 3723
sp.infoJP@swarovski.com

IMAGE COPYRIGHT

P-7

Loft room at Hotel Mono, Singapore, designed by William Chan, Founder and Chief Designer of Spacedge Designs:
© Hotel Mono

P-8

Sustainable acoustic panels & tiles by BAUX
BS Residence by Vincent Van Duysen, photo by Juan Rodriguez
Kite Light by James Dieter

P-11

Photo by Stefan Ruhmke @ PLATNUM.CO

P-12

NANAN Patisserie by BUCK.STUDIO, photo by PION Basia Kuligowska and Przemysław Nieciecki
Nuun Jewels Boutique by Brunoir, photo by Alexandra Mocanu
Leman Locke by Architects Grzywinski + Pons, photo by Nicholas Worley
Marble Lab collection by TERZO PIANO for FIANDRE® Architectural Surfaces
Happy Valley Residence by Lim + Lu, photo by Nirut Benjabanpo

P-14

Photo by Hubertus Hamm @ PLATNUM.CO

P-15

Artwork by Sarah Illenberger @ PLATNUM.CO / Photo by Anna Rosa Krau

P-16

OLIVO restaurant London designed by Pierluigi Piu, artwork by LITHEA, photo by Pierluigi Piu
AMORE Sulwhasoo Flagship Store, Korea by Neri&Hu, photo by Pedro Pegenaute_02
Level Men's by Shed

P-18

Minimalist Beach Reflection © James O'Neil

P-19

plainpicture, photo by Eva Z. Genthe

P-20

SZCZECIN PHILHARMONIC HALL by Sturio Barozzi Veiga © Iñigo Bujedo-Aguirre;

P-21, 23, 24

© Mark Cocksedge

Content is subject to change without notice.

Errors and misprints excepted.

Please note, the actual products may deviate from the pictures in color and effect.

D. Swarovski Distribution GmbH, Swarovskistrasse 30, 6112 Wattens, Austria

© 2017 D. Swarovski Distribution GmbH. All rights reserved. Partial or total publication, transmission, copy or other duplication of texts, graphics, pictures etc. which are to be found in this publication is forbidden without special consent by D. Swarovski Distribution GmbH.

Swarovski® is a registered trademark of Swarovski AG.

Please visit our website for contact information: SWAROVSKI-PROFESSIONAL.COM